

Board of Commissioners Meeting

July 8, 2021

Snoqualmie Valley Hospital

King County Public Hospital District No. 4

Zoom Link by request

Call In Phone Number: 1-253-215-8782

Meeting ID: 999 8843 9250 /Passcode: 927420

Agenda

- 1. 6:30PM - CALL TO ORDER/ROLL CALL**
- 2. 6:32PM – APPROVAL OF THE AGENDA - *Action (vote)***
- 3. 6:35PM - BUSINESS FROM AUDIENCE – *Information***
 - a. Public Comment (*please limit comments to 3 min.*)
- 4. 6:38PM - CONSENT AGENDA– See Separate Consent Agenda - *Action (vote)***
- 5. 6:40PM – COMMUNICATIONS - *Information***
 - a. Emma Herron, President
 - b. Skip Houser, General Legal Counsel
 - RCW 70.44.060 Powers and Duties
 - King County COVID Update
 - c. CEO Report - Renée K. Jensen, CEO
- 6. 7:15PM – COMMITTEE REPORTS– *Information/Discussion***
 - a. 7:15PM – Finance Committee – Commissioners Speikers/Herron
 - i. Approval of warrants, payroll and payroll taxes – May 2021 – *Action (vote)*
 - b. 7:30PM – Medical Committee – Commissioners Herron/Norris
 - c. Facilities Committee – Commissioners Hauglie/Carter (no meeting held in June)
 - d. 7:40pm – Quality Steering Committee – Commissioners Norris/Carter
- 7. 7:50PM – GOOD OF THE ORDER/COMMISSIONER COMMENT**
- 8. 7:55PM - ADJOURNMENT**

Upcoming Meetings - *Information*

- Education Work/Study – Thursday, August 12, 2021, 4:30-6:00pm
- Monthly Business Meeting – Thursday, August 12, 2021, 6:30pm

1. Work Study Minutes – June 10, 2021
2. Regular Meeting Minutes – June 10, 2021
3. Physician Credentialing
 - a. Paul Craig, MD – Telemed/Radia – Initial Privileging
 - b. Kelly Lloyd, MD – Pathology Lab Director – Initial Privileging
 - c. Kaylin Reeve, ARNP – Initial Privileging
 - d. Chris Stanley, PA – Initial Privileging
 - e. Mitchell Patrick Kok, MD – Teleradiology – Extension of Provisional Status
 - f. David Lee, MD – Teleradiology – Extension of Provisional Status
 - g. Yasmeen Ansari, MD – Emergency Medicine – Transition from Provisional to Active
 - h. Gregrey Bennett, MD – Emergency Medicine – Transition from Provisional to Active
 - i. James Boehl, MD – Emergency Medicine – Transition from Provisional to Active
 - j. Richard Chang, MD – Emergency Medicine – Transition from Provisional to Active
 - k. Andrea Fisk, MD – Emergency Medicine – Transition from Provisional to Active
 - l. Cory Heidelberger, MD – Emergency Medicine – Transitional from Provisional to Active
 - m. Dana Hirsch, MD – Emergency Medicine – Transitional from Provisional to Active
 - n. Valerie Huckaby, MD – Emergency Medicine – Transitional from Provisional to Active
 - o. Bradford Kilcline, MD – Emergency Medicine – Transitional from Provisional to Active
 - p. Benjamin Iles, DO – Teleradiology – Transitional from Provisional to Telemedicine
 - q. Hassan Ahmad, MD – Teleradiology – Renewal to Telemedicine
 - r. Natalie Rae Weathered, MD – Neuro – Renewal to Telemedicine by Proxy (UW)
5. Authorization: Verbal authorization from President Herron and Secretary Hauglie for CEO to sign minutes and Physician Credentialing on their behalf.

DRAFT



PUBLIC HOSPITAL DISTRICT NO. 4, KING COUNTY
Board of Commissioners
June 10, 2021
MINUTES
WORK/STUDY
4:30pm-6pm
Via Zoom

PRESENT:

Emma Herron, President
Dariel Norris, Vice President
Kevin Hauglie, Secretary
David Speikers, Commissioner
Jen Carter, Commissioner

ALSO PRESENT:

Renée Jensen, CEO
Karyn Denton, COO/CNO
Patrick Ritter, CFO
Rachel Thompson, MD, CMO
Charles (Skip) Houser, General Counsel
Sandra Stanger, Clerk

CALL TO ORDER: The meeting was called to order by Pres. Herron at 4:30pm followed by roll call. This meeting was held via Zoom virtual meeting pursuant to Proclamation 20-28 issued by Washington State Governor Inslee. All parties listed above were on the call. For public attendance the call-in number was posted prior to the meeting.

APPROVAL OF AGENDA:

There were no objections or changes to the Agenda.

PUBLIC COMMENT: None.

TOPIC OF DISCUSSION:

1. King County Public Health COVID-19 Partnership – presentation given by Peter Adler, King County Public Health Dept.

EXECUTIVE REPORT:

- a. CEO – Renee Jensen: Referemce Report.
- b. COO – Karyn Denton: DOH Survey Summary.

Minutes of this meeting, once approved, are available on the District’s website at www.snoqualmiehospital.org under the Governance page. Copies of any presentations and/or documents are available upon request by contacting Administration at 425.831.2362.

Upcoming Meetings -

- Education Work/Study – Thursday, July 8, 2021 – 4:30pm-6pm
- Monthly Business Meeting – Thursday, July 8, 2021 – 6:30pm

The meeting adjourned at 6:00pm.

Kevin Hauglie, Secretary

Sandra Stanger, Recording Clerk

DRAFT



PUBLIC HOSPITAL DISTRICT NO. 4, KING COUNTY
Board of Commissioners
June 10 2021, 6:30 pm
MINUTES
Via Zoom

PRESENT:

Emma Herron, President
Dariel Norris, Vice President
Kevin Hauglie, Secretary
David Speikers, Commissioner
Jen Carter, Commissioner

ALSO PRESENT:

Renée Jensen, CEO
Karyn Denton, COO/CNO
Patrick Ritter, CFO
Rachel Thompson, MD
Charles (Skip) Houser, General Counsel
Sandra Stanger, Clerk

CALL TO ORDER: The meeting was called to order by Pres. Herron at 6:30pm, followed by roll call. This meeting was held via Zoom pursuant to Proclamation 20-28 issued by Washington State Governor Inslee. The information to attend the meeting was posted prior to the meeting.

APPROVAL OF THE AGENDA:

A motion was made and seconded to approve the agenda as proposed. M/Speikers S/Hauglie

The motion passed by unanimous vote.

PUBLIC COMMENT: Bryan Holloway, Snoqualmie Council Member, in attendance with no comments.

CONSENT AGENDA

A motion was made and seconded to approve the consent agenda as proposed, which includes approval of minutes. M/Carter S/Hauglie

The motion passed by unanimous vote.

COMMUNICATIONS:

- President Herron: Comment regarding upcoming strategic planning session.
- General Counsel Houser:
 - RCW 70.44.060 Powers and Duties
 - King County COVID Update – the state will open at 75% on June 30, except for professional sports.
- CEO Report: Reference CEO Report. Commissioner Carter requested CEO Jensen to provide additional detail for community events in report.

COMMITTEE REPORTS

1. Finance Committee Report - Approval of warrants, payroll and payroll taxes – April 1 thru April 30, 2021. Written minutes from the May 25, 2021 meeting for the April 2021 finances were provided as part of the board packet and reported by Commissioner Speikers, Committee Chair. Both Commissioners Speikers and Herron attended the meeting via Zoom. The committee is scheduled to next meet on June 29, 2021 to review May 2021 finances.

1(a). Approval of Warrants, Payroll and Payroll taxes – April 2021.

A motion was made and seconded to approve total disbursements that includes payroll warrants, hospital and clinic payroll, auto deposits, hospital and clinic payroll taxes, retirement and matching plans, as well as all accounts payable warrants in the total amount of \$3,660,615.68 for April 1 thru April 30, 2021, as recommended by the Finance Committee.

M/Hauglie S/Speikers

The motion carried by unanimous vote.

2. Medical Committee Report. Written minutes from the June 1, 2021 meeting were provided as part of the board packet and reported by Commissioner Norris, Committee Chair. Both Commissioners Norris and Herron attended the meeting via Zoom. The committee is scheduled to next meet on July 6, 2021.

3. Facilities Committee Report. Written minutes from the June 2, 2021 meeting were provided as part of the board packet and reported by Commissioner Hauglie, Committee Chair. Both Commissioners Hauglie and Carter attended the meeting via Zoom. The committee is scheduled to next meet on June 23, 2021.

NOTE: Any documents presented at this meeting are available upon request. Minutes are posted on the District Website at www.snoqualmiehospital.org under the Governance Page. For questions or further information, please contact Administration at 425.831.2362.

NEW BUSINESS:

- a. Strategic Plan Update: Date of Strategic Plan Retreat will be Wednesday, June 30, 2021

GOOD OF THE ORDER/COMMISSIONER COMMENT:

EXECUTIVE SESSION:

Executive Session is convened to discuss the following topics, as permitted by the cited sections of the Revised Code of Washington (RCW 42.30.110):

(g) To evaluate the qualifications of an applicant for public employment or to review the performance of a public employee.

ADJOURN TO EXECUTIVE SESSION at 8:05pm

RECONVENED at 8:25pm. The Commissioners decided on a 360 Evaluation at 12 months (December 2021) for CEO Jensen.

ADJOURNED at 8:30pm

UPCOMING PUBLIC MEETINGS:

Education Work/Study – Thursday, July 8, 2021, 4:30-6:00pm

Monthly Business Meeting – Thursday, July 8, 2021, 6:30pm

Kevin Hauglie, Board Secretary

Sandra Stanger, Recording Clerk

RCW 70.44.060**Powers and duties.**

All public hospital districts organized under the provisions of this chapter shall have power:

(1) To make a survey of existing hospital and other health care facilities within and without such district.

(2) To construct, condemn and purchase, purchase, acquire, lease, add to, maintain, operate, develop and regulate, sell and convey all lands, property, property rights, equipment, hospital and other health care facilities and systems for the maintenance of hospitals, buildings, structures, and any and all other facilities, and to exercise the right of eminent domain to effectuate the foregoing purposes or for the acquisition and damaging of the same or property of any kind appurtenant thereto, and such right of eminent domain shall be exercised and instituted pursuant to a resolution of the commission and conducted in the same manner and by the same procedure as in or may be provided by law for the exercise of the power of eminent domain by incorporated cities and towns of the state of Washington in the acquisition of property rights: PROVIDED, That no public hospital district shall have the right of eminent domain and the power of condemnation against any health care facility.

(3) To lease existing hospital and other health care facilities and equipment and/or other property used in connection therewith, including ambulances, and to pay such rental therefor as the commissioners shall deem proper; to provide hospital and other health care services for residents of said district by facilities located outside the boundaries of said district, by contract or in any other manner said commissioners may deem expedient or necessary under the existing conditions; and said hospital district shall have the power to contract with other communities, corporations, or individuals for the services provided by said hospital district; and they may further receive in said hospitals and other health care facilities and furnish proper and adequate services to all persons not residents of said district at such reasonable and fair compensation as may be considered proper: PROVIDED, That it must at all times make adequate provision for the needs of the district and residents of said district shall have prior rights to the available hospital and other health care facilities of said district, at rates set by the district commissioners.

(4) For the purpose aforesaid, it shall be lawful for any district so organized to take, condemn and purchase, lease, or acquire, any and all property, and property rights, including state and county lands, for any of the purposes aforesaid, and any and all other facilities necessary or convenient, and in connection with the construction, maintenance, and operation of any such hospitals and other health care facilities, subject, however, to the applicable limitations provided in subsection (2) of this section.

(5) To contract indebtedness or borrow money for corporate purposes on the credit of the corporation or the revenues of the hospitals thereof, and the revenues of any other facilities or services that the district is or hereafter may be authorized by law to provide, and to issue and sell: (a) Revenue bonds, revenue warrants, or other revenue obligations therefor payable solely out of a special fund or funds into which the district may pledge such amount of the revenues of the hospitals thereof, and the revenues of any other facilities or services that the district is or hereafter may be authorized by law to provide, to pay the same as the commissioners of the district may determine, such revenue bonds, warrants, or other obligations to be issued and sold in the same manner and subject to the same provisions as provided for the issuance of revenue bonds, warrants, or other obligations by cities or towns under the municipal revenue bond act, chapter 35.41 RCW, as may hereafter be amended; (b) general obligation bonds therefor in the manner and form as provided in RCW 70.44.110 and 70.44.130, as may hereafter be amended; or (c) interest-bearing warrants to be drawn on a fund pending deposit in such fund of money sufficient to redeem such warrants and to be issued and paid in such manner and upon such terms and conditions as the board of commissioners may deem to be in the best interest of the district; and to assign or sell hospital accounts receivable, and accounts receivable for the use of other facilities or services that the district is or hereafter may be authorized by law to provide, for collection with or without recourse. General obligation bonds shall be issued and sold in accordance with

chapter 39.46 RCW. Revenue bonds, revenue warrants, or other revenue obligations may be issued and sold in accordance with chapter 39.46 RCW. In connection with the issuance of bonds, a public hospital district is, in addition to its other powers, authorized to grant a lien on any or all of its property, whether then owned or thereafter acquired, including the revenues and receipts from the property, pursuant to a mortgage, deed of trust, security agreement, or any other security instrument now or hereafter authorized by applicable law: PROVIDED, That such bonds are issued in connection with a federal program providing mortgage insurance, including but not limited to the mortgage insurance programs administered by the United States department of housing and urban development pursuant to sections 232, 241, and 242 of Title II of the national housing act, as amended.

(6) To raise revenue by the levy of an annual tax on all taxable property within such public hospital district not to exceed fifty cents per thousand dollars of assessed value, and an additional annual tax on all taxable property within such public hospital district not to exceed twenty-five cents per thousand dollars of assessed value, or such further amount as has been or shall be authorized by a vote of the people. Although public hospital districts are authorized to impose two separate regular property tax levies, the levies shall be considered to be a single levy for purposes of the limitation provided for in chapter 84.55 RCW. Public hospital districts are authorized to levy such a general tax in excess of their regular property taxes when authorized so to do at a special election conducted in accordance with and subject to all of the requirements of the Constitution and the laws of the state of Washington now in force or hereafter enacted governing the limitation of tax levies. The said board of district commissioners is authorized and empowered to call a special election for the purpose of submitting to the qualified voters of the hospital district a proposition or propositions to levy taxes in excess of its regular property taxes. The superintendent shall prepare a proposed budget of the contemplated financial transactions for the ensuing year and file the same in the records of the commission on or before the first day of November. Notice of the filing of said proposed budget and the date and place of hearing on the same shall be published for at least two consecutive weeks, at least one time each week, in a newspaper printed and of general circulation in said county. On or before the fifteenth day of November the commission shall hold a public hearing on said proposed budget at which any taxpayer may appear and be heard against the whole or any part of the proposed budget. Upon the conclusion of said hearing, the commission shall, by resolution, adopt the budget as finally determined and fix the final amount of expenditures for the ensuing year. Taxes levied by the commission shall be certified to and collected by the proper county officer of the county in which such public hospital district is located in the same manner as is or may be provided by law for the certification and collection of port district taxes. The commission is authorized, prior to the receipt of taxes raised by levy, to borrow money or issue warrants of the district in anticipation of the revenue to be derived by such district from the levy of taxes for the purpose of such district, and such warrants shall be redeemed from the first money available from such taxes when collected, and such warrants shall not exceed the anticipated revenues of one year, and shall bear interest at a rate or rates as authorized by the commission.

(7) To enter into any contract with the United States government or any state, municipality, or other hospital district, or any department of those governing bodies, for carrying out any of the powers authorized by this chapter.

(8) To sue and be sued in any court of competent jurisdiction: PROVIDED, That all suits against the public hospital district shall be brought in the county in which the public hospital district is located.

(9) To pay actual necessary travel expenses and living expenses incurred while in travel status for (a) qualified physicians or other health care practitioners who are candidates for medical staff positions, and (b) other qualified persons who are candidates for superintendent or other managerial and technical positions, which expenses may include expenses incurred by family members accompanying the candidate, when the district finds that hospitals or other health care facilities owned and operated by it are not adequately staffed and determines that personal interviews with said candidates to be held in the district are necessary or desirable for the adequate staffing of said facilities.

(10) To employ superintendents, attorneys, and other technical or professional assistants and all other employees; to make all contracts useful or necessary to carry out the provisions of this chapter,

including, but not limited to, (a) contracts with private or public institutions for employee retirement programs, and (b) contracts with current or prospective employees, physicians, or other health care practitioners providing for the payment or reimbursement by the public hospital district of health care training or education expenses, including but not limited to debt obligations, incurred by current or prospective employees, physicians, or other health care practitioners in return for their agreement to provide services beneficial to the public hospital district; to print and publish information or literature; and to do all other things necessary to carry out the provisions of this chapter.

(11) To solicit and accept gifts, grants, conveyances, bequests, and devises of real or personal property, or both, in trust or otherwise, and to sell, lease, exchange, invest, or expend gifts or the proceeds, rents, profits, and income therefrom, and to enter into contracts with for-profit or nonprofit organizations to support the purposes of this subsection, including, but not limited to, contracts providing for the use of district facilities, property, personnel, or services.

[2011 c 37 § 1; 2010 c 95 § 1; 2003 c 125 § 1; 2001 c 76 § 1; 1997 c 3 § 206 (Referendum Bill No. 47, approved November 4, 1997); 1990 c 234 § 2; 1984 c 186 § 59; 1983 c 167 § 172; 1982 c 84 § 15; 1979 ex.s. c 155 § 1; 1979 ex.s. c 143 § 4; 1977 ex.s. c 211 § 1; 1974 ex.s. c 165 § 2; 1973 1st ex.s. c 195 § 83; 1971 ex.s. c 218 § 2; 1970 ex.s. c 56 § 85; 1969 ex.s. c 65 § 1; 1967 c 164 § 7; 1965 c 157 § 2; 1949 c 197 § 18; 1945 c 264 § 6; Rem. Supp. 1949 § 6090-35.]

NOTES:

Intent—1997 c 3 §§ 201-207: See note following RCW 84.55.010.

Application—Severability—Part headings not law—Referral to electorate—1997 c 3:
See notes following RCW 84.40.030.

Purpose—1984 c 186: See note following RCW 39.46.110.

Liberal construction—Severability—1983 c 167: See RCW 39.46.010 and note following.

Severability—1979 ex.s. c 155: "If any provision of this amendatory act or its application to any person or circumstance is held invalid, the remainder of the act or the application of the provision to other persons or circumstances is not affected." [1979 ex.s. c 155 § 3.]

Severability—1979 ex.s. c 143: See note following RCW 70.44.200.

Severability—Effective dates and termination dates—Construction—1973 1st ex.s. c 195: See notes following RCW 84.52.043.

Purpose—1970 ex.s. c 56: See note following RCW 39.52.020.

Purpose—Severability—1967 c 164: See notes following RCW 4.96.010.

Eminent domain

by cities: Chapter 8.12 RCW.

generally: State Constitution Art. 1 § 16.

Limitation on levies: State Constitution Art. 7 § 2; RCW 84.52.050.

Port districts, collection of taxes: RCW 53.36.020.

*Tortious conduct of political subdivisions, municipal corporations and quasi-municipal corporations, liability for damages: Chapter **4.96** RCW.*

**"STRATEGIC PLANNING IS WORTHLESS - UNLESS THERE IS FIRST A STRATEGIC VISION."
~ JOHN NAISBITT**

Growth

Growth initiatives must be measurable, consistent with our mission, financially sustainable, and responsive to the health needs of those we serve.

- **COVID Testing** – Now occurring by on line appointment scheduling at the Ridge clinic.
- **Ridge Clinic Expansion/Urgent Care** – Behind schedule due to many contributing factors. Targeting August opening with X-ray in progress and likely a month behind opening.

Quality

The commitment and continuing efforts to use measurable interventions to propel and sustain improvement that contributes to better patient outcomes, better system performance, and more satisfying experiences.

- **Department of Health Survey** – Our survey report has been received and our responses are prepared. Few minor citations received and all have been corrected or a plan of correction is in place. Final documents will be returned to DOH early July.
- **Clinic Documentation** – The DAX contract is signed. We will be beginning implementation soon which will initially involve 9 primary care providers. Dr. Thompson will be working closely with the providers to build templates and launch the product.
- **Quality Program Redesign** – The quality team and committee are working through a total redesign of information flow and data sets. Dr. Thompson is leading this work. She presented the committee's initial recommendations to the Board Quality Committee in June.
- **Endoscopy** – We are working with our referral team as well as our Endo care givers to identify and reach out to our patients that are in need of colonoscopy. We have capacity and little to no wait time for appointments so we are working hard to fill our schedules.
- **Board Education** – Commissioner Herron and CEO Jensen participated in the WSHA CEO & Board member workshop. The content was well presented and will be available in recorded format. We will distribute to the commissioners that were not able to attend when it is available.

Relationships

Relationships are at the core of our existence. Relationships, based on mutual respect and trust, are interactions that will make us better as individuals and an organization.

- **COVID Vaccinations** – The number of vaccinations has dramatically decreased to about 30 per day. Residents have the option of on line scheduling for appointments or drive up with no appointment. We continue to work with King County Public Health on identifying areas within our service area that have low vaccination rates and creative ways to help improve those numbers. We are happy to report that over 80% of the SVH staff have received at least one doses of vaccine.
- **Washington State University Medical School** – Dr. Thompson and CEO Jensen met with Dr. Larry Schecter to discuss Snoqualmie becoming a training site for medical students. We will be introducing this idea to some of our medical staff and looking for win-win opportunities for us to engage and provide a positive experience for the students.
- **Community Events** – We are actively engaged in the local summer community events. We will have a first aid booth, lost child assistance and COVID shots available for the Red, White and Boom event in Snoqualmie on Sunday, July 4th.
- **SpaceLabs** – The executive team did an onsite visit to SpaceLabs located near the Ridge in Snoqualmie. The CEO and several other executives hosted our team in an exploratory conversation about how our organizations might work together and support each other. Of particular interest is working on new product development and potentially data gathering and proof of concept for small hospitals. Additional conversations and visits are planned as we explore possibilities for collaboration.
- **Brand Exposure** – We will have a full-page ad in the SnoValley Chamber Outdoor Guide. The guide should first week in July.
- **Community Engagement Efforts** – The meeting in June consisted of the following:
 - **Fall City Community Association** Meeting, the recent meetings have addressed the planned growth in the Fall City/Preston area and the amount of support provided by the County and State. Lots happening here with a subarea plan in the works. We have been included in the conversation.
 - **SnoValley Chamber of Commerce** Meetings, provide hospital updates, COVID Testing and Vaccine information and find ways to partner with local businesses and events.
 - **Summer Hazards Seminar** with King County OEM, Certificate program, PIO outreach and forecasting for communications during this busy season chocked full of hazards.
 - **Monthly Parent Education Alignment** Meeting through **Empower Youth**. This group is addressing a multitude of impacts COVID has had on our youth. Parents need resources so I worked with the group on a survey that was disseminated to SnoValley parents. It will help define programs for parents and youth moving forward. I was able to forward the survey to Dr. Jain in the event she found it useful to include her patients' parents in the conversation.

- **Crisis Standards of Care Grand Rounds with DOH.** Participating gave Sherry an opportunity to better understand the efforts behind standards and protocols statewide with COVID. It kept our name as a participant.
- **Trail Youth Job Fair,** supported HR and Trail Youth and got to meet parents as we launched the opportunity to reach out to our younger population to offer internships.
- **Healthy Communities Coalition,** looking at messaging around this post-COVID limbo and supporting a community that may see a leap in homelessness.
- **SnoKing Ice Arenas Grand Re-opening.** Met the directors and am working on sponsorships/partnerships/promotions. (While Sherry was there, they sent two skaters to the ED.)

Finance

Balanced budget, positive cash flow, debt repayment and positive financial returns on District investments.

- **See finance summary prepared by CFO Ritter for more details on financial performance.**
- **Director of Finance –** The new director of finance has been hired and will begin working on site mid-July. Initially she will focus on assistance with FEMA grant accounting, reporting and organization of funds. From there, transitioning to costing and forecasting the strategic plan and finally budget season. This plan will pair nicely with the timing of Jim's retirement and allow for ample transition time.

Operations

Functions or activities of an organization that are necessary to run its business and to support the core functions of treatment and payment.

- **Electronic Medical Record (EMR) –** Cost estimates were presented to the finance committee and a full, deep dive into the selection process will occur at the July Board work session.
- **Strategic Planning –** The rough draft of the strategic plan was presented to the board during a full day workshop. Next steps will be refinement and socialization. Finalizing objectives and final plan details to be presented to the board in August.
- **Quarterly Medical All-Staff Meeting –** the Quarterly meeting of the medical staff was well attended in person by providers. The attending providers were engaged and had an opportunity to give feedback on the draft strategic plan.
- **Excessive Heat –** With the extreme heat this past week our facilities team was challenged keeping areas of the hospital cool. Our COVID vaccination team moved operations indoors for 2 days but all other areas were able to operate as normal. Communication and coordination with the city for emergency response as well as at the state level for bed capacity and hospital responses occurred throughout the extreme temperatures.

Board Education Opportunities

1. July 20th –
 - **Telemedicine 101: Considerations when implementing or expanding services**
 - Cindy Jacobs & David Streeter
 - Webinar (Register on WSHA Website)
2. September 10th –
 - **Charity Care**
 - Taya Briley & Zoshia Stanley
 - Webinar (Register on WSHA Website)
3. September 16th – Dec 9th
 - **WSHA Annual Meeting**
 - eSeries
 - More details TBD

Respectfully Submitted,

Renée K. Jensen



**Public Hospital District No. 4, King County
Finance Committee
Tuesday, June 29, 2021, 1-2pm
Via Zoom
Dial: (253) 215-8782
Meeting ID: 961 7273 4345/Passcode: 985394**

AGENDA

Committee Members:

David Speikers	Commissioner, Chair of Finance
Emma Herron	Commissioner, President
Renée Jensen	CEO
Patrick Ritter	CFO
Karyn Denton	COO
Rachel Thompson, MD	CMO
Jim Baldauf	Finance Director

- May 2021 Financials
 - a) Variances
 - b) Income Statement
 - c) Balance Sheet
 - d) Cash Flow
 - e) Dashboard and Stats
- CARES Funds Update
- EMR Update
- Committee Community Member

PUBLIC HOSPITAL DISTRICT NO. 4, KING COUNTY

MAY 2021 FINANCE COMMITTEE

SLIDES

JUNE 29, 2021

Financial Statements

KING COUNTY HOSPITAL DISTRICT # 4
HOSPITAL & CLINICS COMBINED
STATEMENT OF OPERATIONS
ACTUAL vs BUDGET
MAY 2021

CURRENT MONTH					YEAR TO DATE			
ACTUAL	BUDGET	VARIANCE	% VARIANCE		ACTUAL	BUDGET	VARIANCE	% VARIANCE
\$ 3,250,588	\$ 3,461,842	\$ (211,254)	-6%	NET PATIENT SERVICE REVENUE	\$ 17,158,649	\$ 16,582,069	\$ 576,580	3%
82,110	87,161	(5,051)	-6%	TAXATION FOR OPERATIONS	409,319	424,560	(15,241)	-4%
56,367	44,067	12,300	28%	OTHER	247,530	222,252	25,278	11%
3,389,065	3,593,070	(204,005)	-6%	TOTAL OPERATING REVENUE	17,815,498	17,228,881	586,617	3%
				OPERATING EXPENSES				
1,686,637	1,657,285	(29,352)	-2%	SALARIES	8,005,233	8,286,425	281,192	3%
356,981	385,504	28,523	7%	EMPLOYEE BENEFITS	1,887,740	1,927,520	39,780	2%
339,922	322,250	(17,672)	-5%	PROFESSIONAL FEES	2,285,760	1,609,886	(675,874)	-42%
297,698	254,720	(42,978)	-17%	SUPPLIES	1,469,028	1,273,600	(195,428)	-15%
35,545	21,639	(13,906)	-64%	REPAIRS AND MAINTENANCE	138,145	108,195	(29,950)	-28%
38,228	36,262	(1,966)	-5%	UTILITIES	230,133	181,310	(48,823)	-27%
341,890	327,921	(13,969)	-4%	PURCHASED SERVICES	1,783,414	1,639,605	(143,809)	-9%
13,567	14,583	1,016	7%	INSURANCE	69,316	72,915	3,599	5%
54,172	63,641	9,469	15%	LEASE AND RENTALS	303,145	318,205	15,060	5%
343,631	328,882	(14,749)	-4%	DEPRECIATION	1,630,480	1,644,410	13,930	1%
60,948	48,872	(12,076)	-25%	OTHER	257,798	240,109	(17,689)	-7%
3,569,218	3,461,559	(107,659)	-3%	TOTAL OPERATING EXPENSES	18,060,192	17,302,180	(758,012)	-4%
(180,153)	131,511	(311,664)	-237%	OPERATING INCOME	(244,695)	(73,299)	(171,396)	-234%
6,249	10,701	(4,452)	-42%	INVESTMENT INCOME, NET OF AMOUNT CAPITALIZED	35,037	52,125	(17,088)	-33%
262,853	260,160	2,693	1%	TAXATION FOR BOND PRINCIPAL & INTEREST	1,299,851	1,267,231	32,620	3%
(418,303)	(428,346)	10,043	2%	INTEREST EXPENSE, NET OF AMOUNT CAPITALIZED	(2,123,662)	(2,140,198)	16,536	1%
(9,096)	(9,096)	(0)	0%	BOND ISSUANCE AND FINANCING COSTS	(45,482)	(45,480)	(2)	0%
815,277	148,015	667,262	-451%	NON OPERATING REV - PROVIDER RELIEF FUNDS	5,524,936	720,977	4,803,959	-666%
-	11,882	(11,882)	-100%	OTHER NET	161,862	57,877	103,985	180%
656,980	(6,684)	663,664	9929%	NON OPERATING, NET	4,852,543	(87,468)	4,940,011	5648%
476,827	124,827	352,000	-282%	CHANGE IN NET POSITION	4,607,848	(160,767)	4,768,615	2966%
-	-			NET POSITION BEGINNING OF YEAR	-	-	-	
\$ 476,827	\$ 124,827	\$ 352,000	-282%	NET POSITION	\$ 4,607,848	\$ (160,767)	\$ 4,768,615	2966%
-5.3%	3.7%	-9.0%		Operating Margin %	-1.4%	-0.4%	-0.9%	
14.1%	3.5%	10.6%		Total Margin %	25.9%	-0.9%	26.8%	

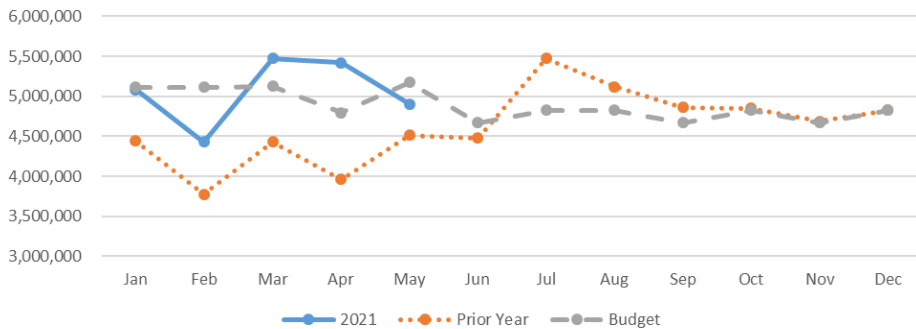
SNOQUALMIE VALLEY HOSPITAL COMBINED BALANCE SHEET		APRIL 2021	MAY 2021
ASSETS			
CURRENT ASSETS			
UNRESTRICTED CASH		12,013,459	11,846,835
BOARD RESTRICTED FUNDS		102,277	102,277
CMS ADVANCE PAYMENT		10,989,563	10,513,418
MANDATED RESERVE FUNDS		10,854,615	11,083,970
TOTAL CASH		33,959,914	33,546,500
ACCOUNTS RECEIVABLE		8,852,070	8,423,374
LESS A/R ALLOWANCES		2,777,759	2,723,206
COST REPORTS RECEIVABLE		391,000	463,926
EMR MEANINGFUL USE		-	-
TOTAL NET RECEIVABLE		6,465,311	6,164,095
TAXES RECEIVABLE		2,272,439	2,050,090
INVENTORY		259,228	256,199
PREPAID EXPENSES		82,914	99,736
INTANGIBLE ASSETS		3,134,776	3,125,679
OTHER RECEIVABLES		1,444,854	1,461,180
TOTAL CURRENT ASSETS		47,619,436	46,703,478
FIXED ASSETS			
LAND AND IMPROVEMENTS		26,604,969	26,604,969
BUILDINGS		32,464,429	32,464,429
MOVABLE EQUIPMENT		8,885,853	8,894,475
INFORMATION SYSTEMS		4,702,979	4,702,979
RIGHT TO USE ASSET		1,466,469	1,385,518
LESS: ACCUMULATED DEPRECIATION		23,445,394	23,700,648
NET FIXED ASSETS		50,679,306	50,351,721
TOTAL ASSETS		98,298,741	97,055,199

SNOQUALMIE VALLEY HOSPITAL COMBINED BALANCE SHEET		APRIL 2021	MAY 2021
LIABILITIES AND FUND BALANCES			
CURRENT LIABILITIES			
NOTES PAYABLE		966,000	966,000
COST REPORTS PAYABLE		-	-
ACCOUNTS PAYABLE		1,187,868	889,999
ACCRUED PAYROLL & TAXES		2,253,736	2,441,096
ACCRUED INTEREST (BONDS)		970,216	1,118,979
OTHER CURRENT LIABILITIES		(83,211)	(83,521)
CURRENT PORTION LONG TERM DEBT		1,672,917	1,631,250
CURRENT PORTION CMS ADVANCE PAYMENT		4,125,677	3,649,532
DEFERRED STIMULUS REVENUE		1,630,553	815,277
DEFERRED TAX REVENUE		2,679,265	2,337,974
TOTAL CURRENT LIABILITIES		15,403,020	13,766,586
LONG TERM LIABILITIES			
LIABILITY RIGHT TO USE ASSET		1,441,029	1,357,092
CMS ADVANCE PAYMENT PAYABLE		6,863,886	6,863,886
LONG TERM LIABILITIES (LTGO BONDS)		45,790,000	45,790,000
REVENUE BONDS		45,453,321	45,453,321
TOTAL LONG TERM LIABILITIES		99,548,236	99,464,299
EQUITY/FUND BALANCE PERIOD END		(16,652,514)	(16,175,686)
TOTAL LIABILITY + EQUITY/FUND BALANCE		98,298,741	97,055,199

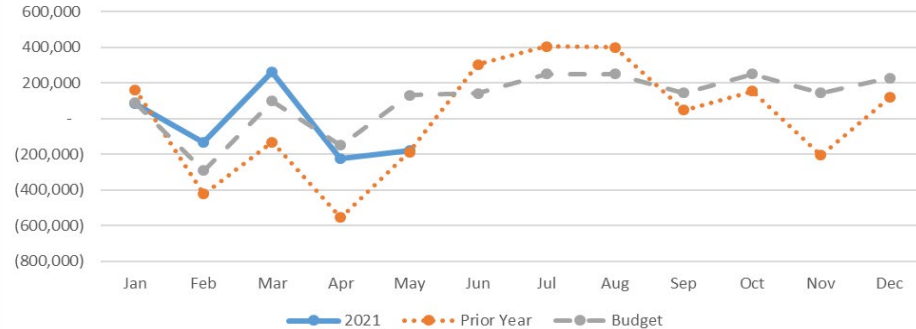
STATEMENT OF CASH FLOWS		
SOURCE AND APPLICATION OF FUNDS	APRIL 2021	MAY 2021
Net Income	3,869,122	476,827
Add (Deduct) items not affecting cash:		
Depreciation expense	255,254	255,254
(Increase) decrease in accounts receivable	(297,130)	301,216
(Increase) decrease in current assets		
Tax Receivable/Other Receivable	1,686,220	206,024
Inventory	(13,752)	3,029
PrePaid Expenses	(43,540)	(16,822)
Intangible Assets	9,096	9,096
Increase (decrease) in current liabilities		
Notes and Loans Payable	-	-
Accounts Payable	433,136	(297,868)
Accrued Payroll & Taxes	75,796	187,360
Accrued Interest (Bonds)	148,763	148,763
Other Current Liabilities	(27,800)	(310)
Deferred Stimulus Funds	(4,160,197)	(1,291,421)
Current Long Term Debt	(41,667)	(41,667)
Deferred Tax Revenue	(341,291)	(341,291)
Other (net)	-	-
Net Cash provided by operating activities	1,552,013	(401,808)
CASH FLOW FROM INVESTING ACTIVITIES		
Investment in plant and equipment		
Land	-	-
Buildings	(5,621)	-
Equipment	(7,523)	(8,622)
Right to Use Assets	51,827	80,952
Net cash used for investing activities	38,682	72,330
CASH FLOW FROM FINANCING ACTIVITIES		
Change in long-term liabilities	(94,266)	(83,936)
Increase (decrease) in cash	\$ 1,496,429	\$ (413,414)
Beginning Cash Balance	32,463,485	33,959,914
Ending Cash Balance	33,959,914	33,546,500

Financial Dashboards (Revenue & Income)

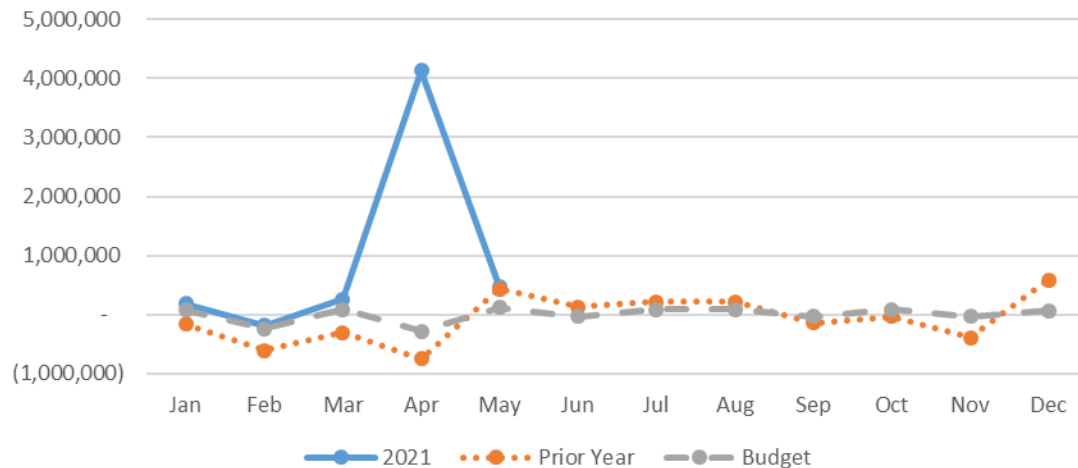
Gross Revenue



Operating Income

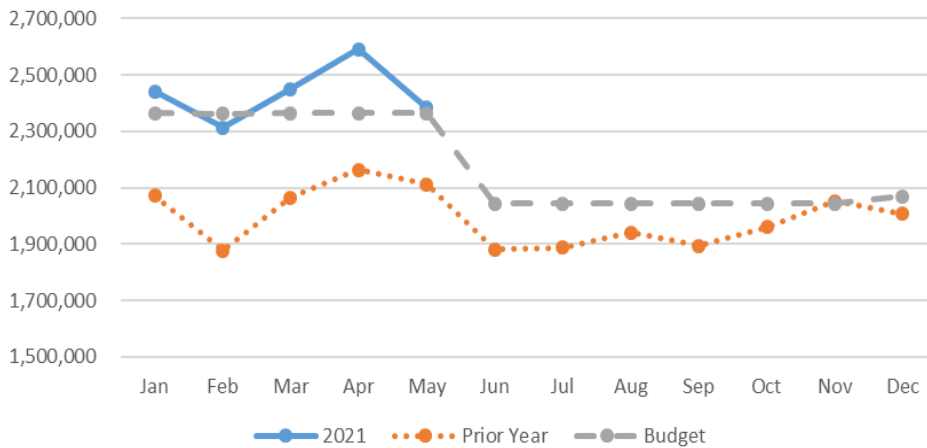


Net Income

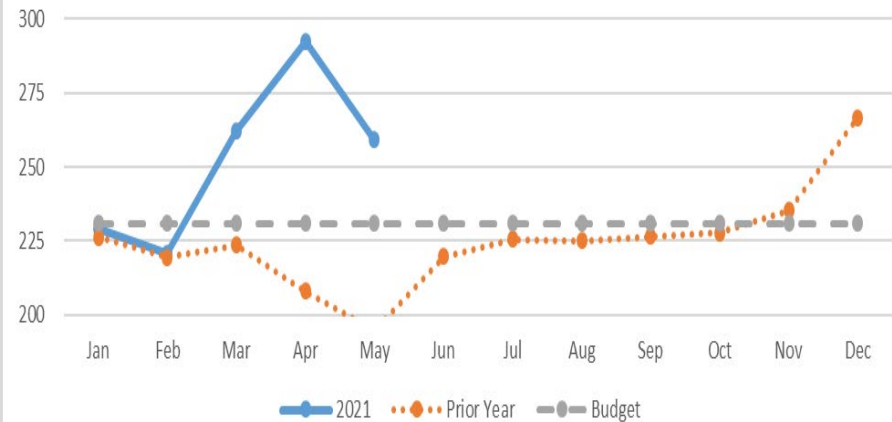


Financial Dashboards (Expenses)

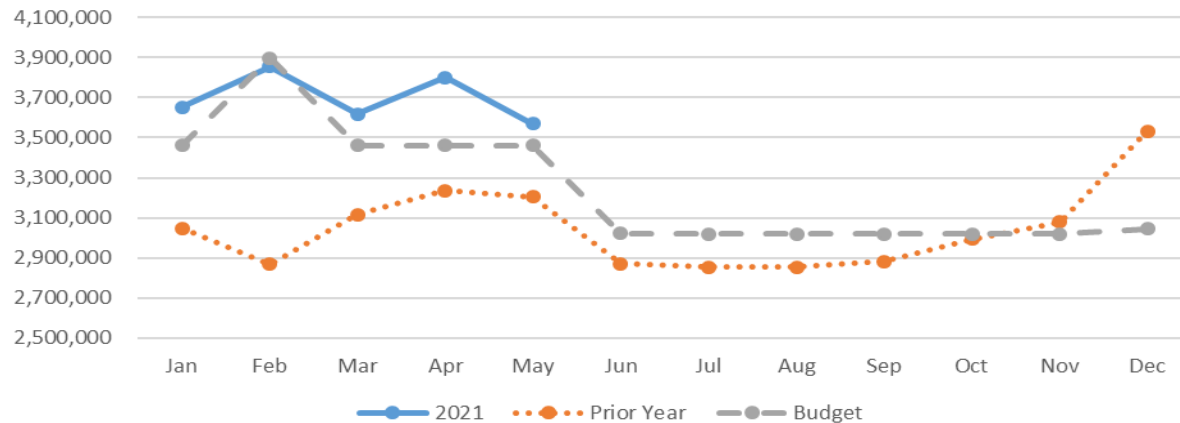
Salary Wages and Benefits



FTEs

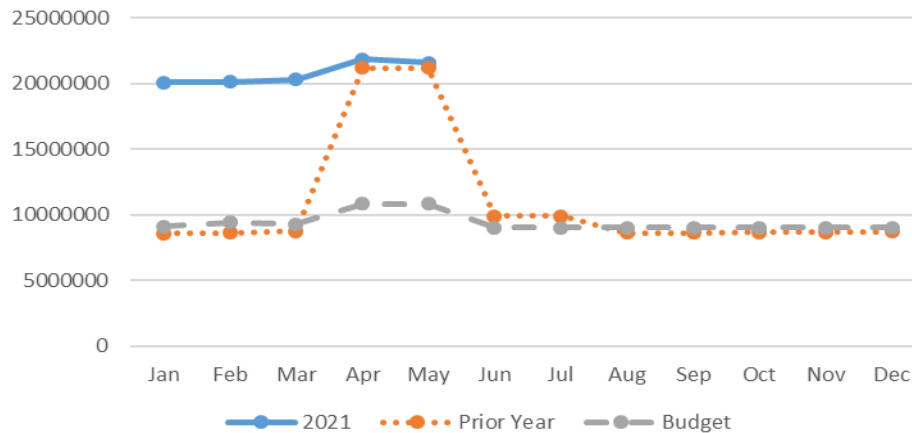


Operating Expenses

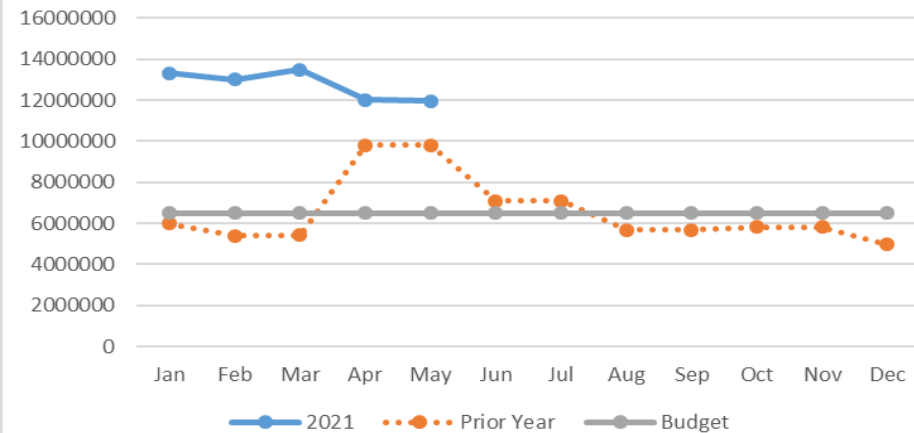


Financial Dashboards (Cash)

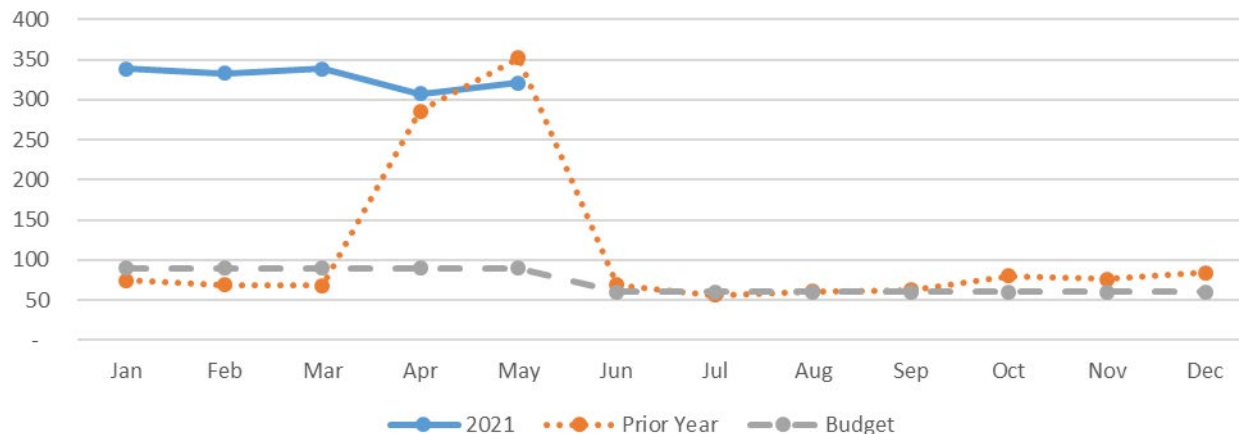
Restricted Cash



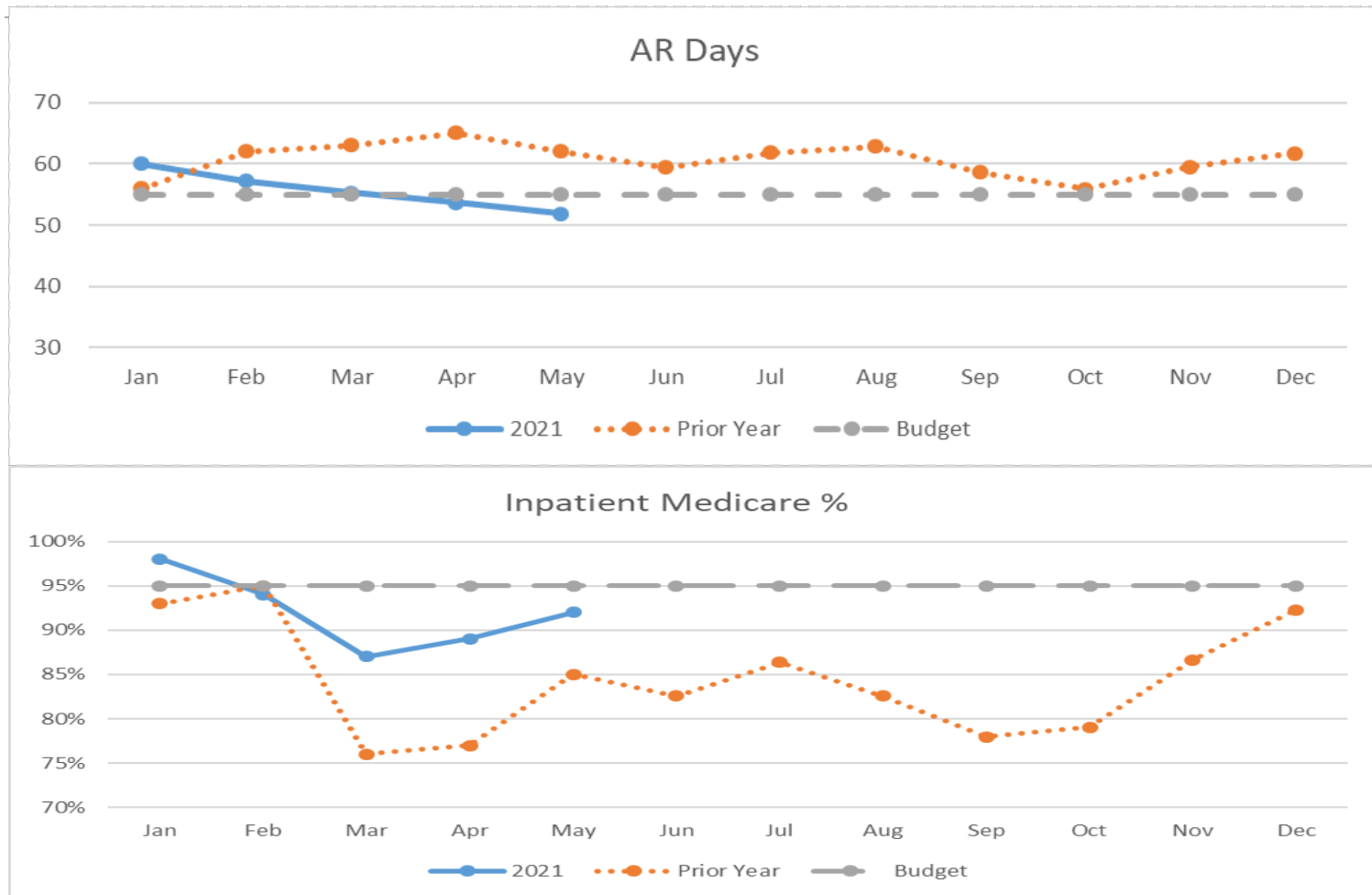
Unrestricted Cash



Days Cash

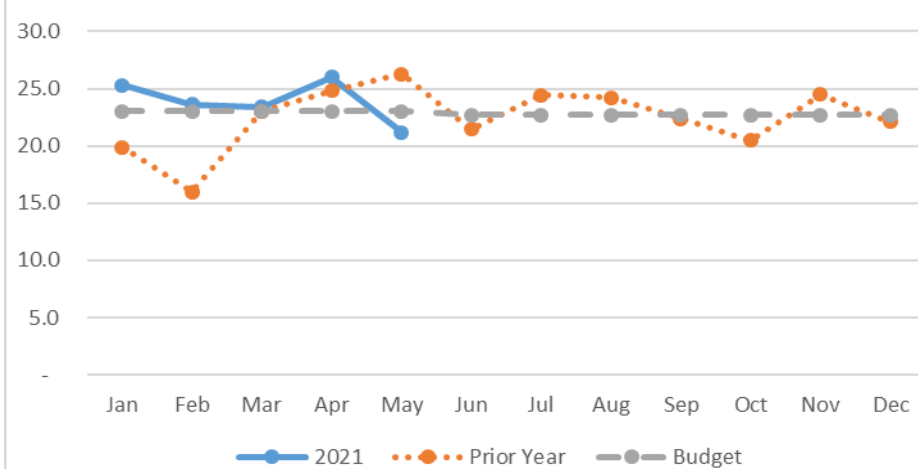


Productivity Dashboards (AR/Payor Mix)

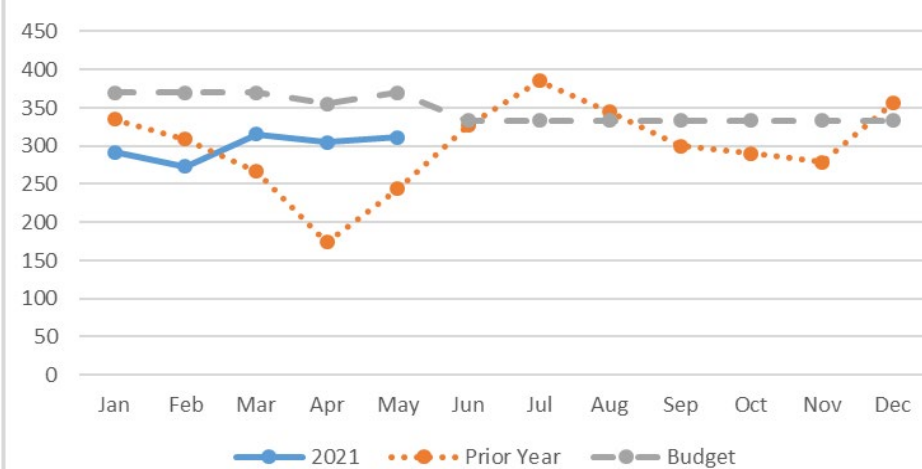


Productivity Dashboards (Census Visits)

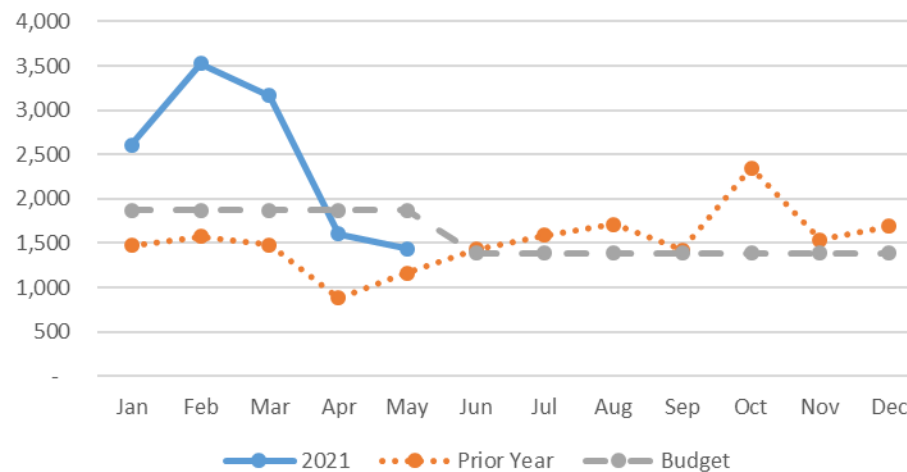
Acute/Swingbed Avg Daily Census



ER Visits

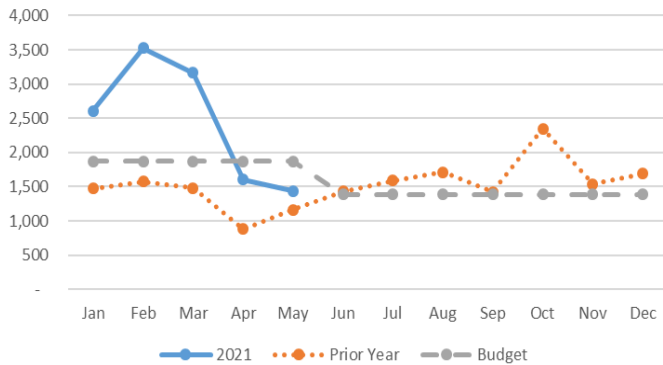


Clinic Visits

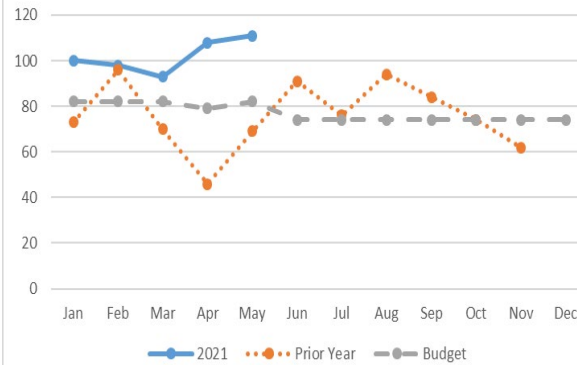


Productivity Dashboards (Procedures)

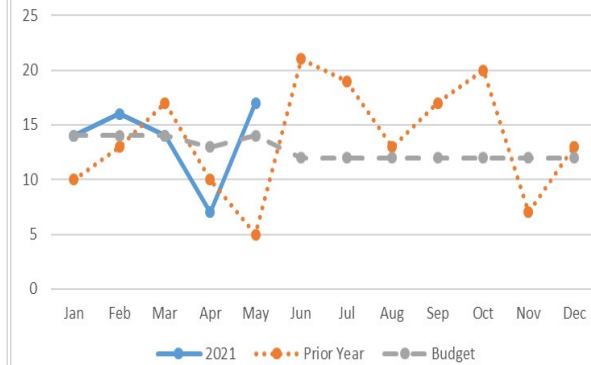
Clinic Visits



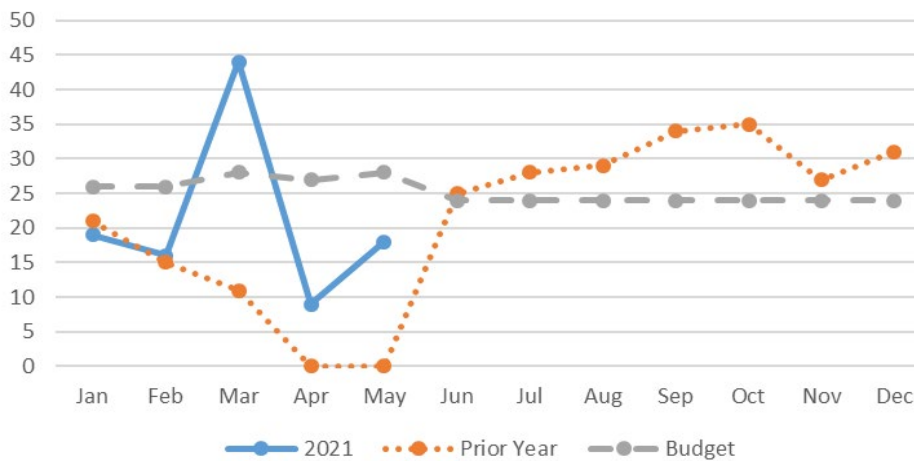
CT



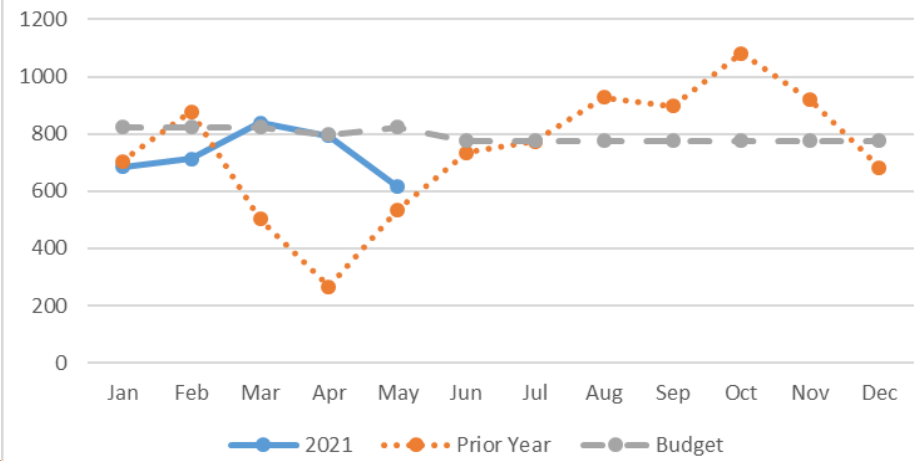
MRI



Endoscopy



Outpatient Rehab



CARES Funds Use & Reporting

Summary of Reporting Requirements

	Payment Received Period (Payments Exceeding \$10,000 in Aggregate Received)	Deadline to Use Funds	Reporting Time Period
Period 1	From April 10, 2020 to June 30, 2020	June 30, 2021	July 1 to September 30, 2021
Period 2	From July 1, 2020 to December 31, 2020	December 31, 2021	January 1 to March 31, 2022
Period 3	From January 1, 2021 to June 30, 2021	June 30, 2022	July 1 to September 30, 2022
Period 4	From July 1, 2021 to December 31, 2021	December 31, 2022	January 1 to March 31, 2023

SVH Will Recognize Remaining Funds in June

EMR UPDATE

- ❖ Will be able to use CARES funds. ~1,000,000 Available
 - ❖ Is explicitly listed as an allowable expense.
- ❖ Looked at CPSI replacement for Centriq
 - ❖ Similar Support to Centriq
 - ❖ Multiple interfaces are required
 - ❖ Not patient friendly
 - ❖ Some modules are clinically unsafe.

EMR UPDATE (Cont)

❖ Reviewed Deals from 3 Facilities for EPIC

❖ Providence

- ❖ 2 year waiting
- ❖ Rigid structure not customizable
- ❖ No Loan/Financing

❖ MultiCare

- ❖ 2 Year Waiting
- ❖ No Critical Access Hospital Experience
- ❖ Some Customization
- ❖ 3.5% Financing

❖ Overlake

- ❖ Available in 6-9 months
- ❖ Customizable
- ❖ 2.1M in Loan Forgiveness
- ❖ 50% Financing at 2%
- ❖ Already in ED
- ❖ Experience working with Implementation Team

May 2021

Financials Write-Up

Income Statement Narrative:

Net patient revenue was 6% below budgeted monthly income for May. A daily inpatient census of 21.2 left payments short on the inpatient side by \$92,000. Endoscopy, Lab, Pharmacy, Infusion, and Wound were down a combined \$104,000. Clinics were down about \$75,000. The favorable revenue variances included MRI, CT, and Therapies which were \$210,000 better than budget projections. May ED volumes increased slightly over April, and ER revenue was right at budget.

May's operating loss was \$303,000 more than budget. A significant portion of this loss (\$150,000) was payer mix related included increased Medicaid and Premiera patients. The remaining loss was due to the decreased revenues mentioned above.

We recognized \$816,000 in PRF funds in May for COVID 19 expenses and lower 2021 revenues.

Expense Variances

Salaries Increased 2%. The District hired clerks for King County Vaccine project, which the FEMA contract will reimburse. Also converted some agency to directly employed staff.

Professional Fees were \$17,672 above budget—Pro fees are still above budget, but total expense decreased vs. April due to reduced census and conversion to direct employed for agency staff.

Repairs were \$14,000 above budget. HVAC Maintenance and Security Camera Software.

Supplies were \$42,000 above budget—increased supplies for King County Vaccine Project and the increased item expenses. The pandemic has increased the cost of basic supplies like gloves by 300%.

Other Expenses were \$12,076 above budget. B&O taxes and Dues and Subscriptions payments to vendors and postage increased due to letters sent to patients for provider changes.

Purchased Services were \$13,969 above budget—COVID 19 expense and net revenue collection increase (Lower AR).

Balance Sheet Highlights:

- Assets decrease
 - Cash Down paying AP
 - AR down
 - Current Liabilities Decrease
 - Monthly CMS Advance Payment Recoupment
 - Recognition of CARES Funds
 - Increase in Equity ~\$476,000 NI
 - Net Income from CARES recognition
-

Cash Flow Statement Highlights:

- **Operating Activities:** Decrease ~\$401,000
 - AP payments
 - Deferred Stimulus recognition
- **Investing Activities:** Increase ~\$72,000
 - Leases and rights to use.
- **Financing Activities:** Decrease ~\$84,000
 - Debt payments.

Total cash decrease ~\$413,000

AR Days Goal 55

- 51.9 Days

Bond Covenants: (Snapshot forecast)

- Debt Coverage 5.0. requirement 1.20
- Reserve Requirement is at \$3,675,188 as required.
- Days cash is 111. The bond requirement is 60

TO: Carrie Marks and Renée Jensen, CEO
FROM: Sandra Stanger
SUBJECT: COMMISSIONER COMPENSATION – May 30-June 12, 2021
DATE: June 15, 2021

EMMA HERRON

June 1, 2021 – Board Planning with Renee & Kevin
June 1, 2021 – Medical Committee (no payment/same day meeting)
June 10, 2021 – Work Study & Board Meeting

DARIEL NORRIS

June 1, 2021 – Medical Committee
June 10, 2021 – Work Study & Board Meeting

KEVIN HAUGLIE

June 1, 2021 – Board Planning with Emma & Renee
June 2, 2021 – Facilities Committee
June 7, 2021 – 1:1 with Renee
June 10, 2021 – Work Study & Board Meeting

DAVID SPEIKERS

June 10, 2021 – Work Study & Board Meeting

JEN CARTER

June 2, 2021 – Facilities Committee
June 2, 2021 – 1:1 with Renee (no payment/same day meeting)
June 10, 2021 – Work Study & Board Meeting

TOTALS:

Emma Herron	2 @ \$128 = \$256
Dariel Norris	2 @ \$128 = \$256
Kevin Hauglie	4 @ \$128 = \$512
David Speikers	1 @ \$128 = \$128
Jen Carter	2 @ \$128 = \$256

11 @ \$128 = \$1,408

PUBLIC HOSPITAL DISTRICT NO. 4, KING COUNTY

Snoqualmie Valley Hospital

9801 Frontier Ave. S.E. Snoqualmie, WA 98065

Phone: 425-831-2300, FAX: 425-831-1994

Cash Disbursements for the period May 1 to May 31, 2021

Northwest Bank Accounts Payable Warrants

\$1,994,858.45	Accounts Payable Warrants Warrants #75855 to #76087
<u><u>\$1,994,858.45</u></u>	

Northwest Bank Payroll Warrants & EFT

\$0.00	Payroll Warrants
1,110,830.35	Hospital & Clinic Payroll Auto Deposits
412,611.06	Hospital & Clinic Payroll Tax
101,224.57	Hospital & Clinic Retirement 457, 403B, & 403B Match Plans
<u><u>\$1,624,665.98</u></u>	

GRAND TOTAL

<u><u>\$3,619,524.43</u></u>

I hereby certify that the described supplies have been received or services rendered in behalf of Public Hospital District No. 4 of King County.

Renee Jense, Chief Executive Officer

Kevin Hauglie, Commissioner, Secretary

I, the undersigned, do hereby certify under penalty of perjury that the materials have been furnished, the services rendered or the labor performed as described herein, and that the claim is a just, due and paid obligation against Public Hospital District #4, King County and that I am authorized to authenticate and certify to said claim.

Carolyn Marks, Assistant Director Finance

I:\Carrie\Board Report & Monthly Reports\BOARD-Cash Disbursements\BOARD-Cash disbursements 2021.xls\May21

Public Hospital District No. 4 King County

Financial Update

Cash Balances

5/31/2021

	<u>Bank/Fund</u>	<u>Cash Balance</u>
Unrestricted		
	Northwest Bank	
	Warrant	\$ 529,599.39
	Outstanding Warrants	736,216.38
	Payroll	15,363.64
	Operating	2,746,116.26
	Reconciling Items	19,873.98
	Lockbox	500,000.00
	Money Market	1,322,656.82
	US Bank Treasury	4,901,254.57
	 Banner Bank	
	#4052002599	320,456.73
	#4052002382	272,544.19
	 Key Bank	
	#479681237018	88,953.16
	 General Fund King Co	
	140040010	70,155.18
	GO Bond Fund King Co	
	140048510	323,244.56
	 Petty Cash	400.00
	Total Unrestricted	<u><u>11,846,834.86</u></u>
Restricted		
	Limited GO Bond Fund-King Co	
	140048400	5,661,010.41
	Reserve Fund-King Co	
	140046010	1,747,771.95
	 Reserve 2015 Rev Bond-US Bank	3,675,187.50
	 CMS Advance Payment (Money Mkt)	10,513,418.19
		<u><u>\$ 21,597,388.05</u></u>
	 Board Restricted Funds	\$ 102,276.62
	Total All Accounts	<u><u>\$ 33,546,499.53</u></u>

PUBLIC HOSPITAL DISTRICT NO 4, KING COUNTY

Cash Disbursements for 2021

	Accounts Payable	Payroll and Taxes	Total
January	\$ 1,883,824.00	\$ 1,580,891.83	\$ 3,464,715.83
February	\$ 1,882,972.66	\$ 1,546,935.95	\$ 3,429,908.61
March	\$ 1,934,346.63	\$ 1,604,040.34	\$ 3,538,386.97
April	\$ 2,008,435.53	\$ 1,652,180.15	\$ 3,660,615.68
May	\$ 1,994,858.45	\$ 1,624,665.98	\$ 3,619,524.43
June	\$ -	\$ -	\$ -
July	\$ -	\$ -	\$ -
August	\$ -	\$ -	\$ -
September	\$ -	\$ -	\$ -
October	\$ -	\$ -	\$ -
November	\$ -	\$ -	\$ -
December	\$ -	\$ -	\$ -
Total	\$ 9,704,437.27	\$ 8,008,714.25	\$ 17,713,151.52

Cash Disbursements for 2020

Accounts Payable	Payroll and Taxes	Total	Over(Under) Prior Year Cash
\$ 1,794,267.38	\$ 2,298,858.93	\$ 4,093,126.31	\$ (628,410.48)
\$ 1,375,026.40	\$ 1,463,584.13	\$ 2,838,610.53	\$ 591,298.08
\$ 1,118,506.09	\$ 1,522,033.73	\$ 2,640,539.82	\$ 897,847.15
\$ 1,846,911.11	\$ 1,561,253.06	\$ 3,408,164.17	\$ 252,451.51
\$ 1,367,079.00	\$ 1,493,786.65	\$ 2,860,865.65	\$ 758,658.78
\$ 1,487,745.21	\$ 1,521,572.41	\$ 3,009,317.62	\$ -
\$ 1,662,466.66	\$ 2,250,043.73	\$ 3,912,510.39	\$ -
\$ 1,228,428.63	\$ 1,486,408.62	\$ 2,714,837.25	\$ -
\$ 1,538,679.86	\$ 1,495,546.47	\$ 3,034,226.33	\$ -
\$ 2,192,277.24	\$ 1,516,995.95	\$ 3,709,273.19	\$ -
\$ 1,692,426.69	\$ 1,558,854.01	\$ 3,251,280.70	\$ -
\$ 1,624,796.74	\$ 2,653,938.19	\$ 4,278,734.93	\$ -
\$ 18,928,611.01	\$ 20,822,875.88	\$ 39,751,486.89	\$ 1,871,845.04

Cash Receipts for 2021

	Deposits at Banks All accounts	Line of Credit or Bond Fund or Money Market	Total
January	\$ 5,433,086.54		\$ 5,433,086.54
February	\$ 3,271,499.60		\$ 3,271,499.60
March	\$ 4,291,205.71		\$ 4,291,205.71
April	\$ 3,330,161.68		\$ 3,330,161.68
May	\$ 3,144,291.11		\$ 3,144,291.11
June		\$ -	\$ -
July		\$ -	\$ -
August		\$ -	\$ -
September		\$ -	\$ -
October		\$ -	\$ -
November		\$ -	\$ -
December		\$ -	\$ -
Total	\$ 19,470,244.64	\$ -	\$ 19,470,244.64

Cash Receipts for 2020

Deposits at Banks All accounts	Line of Credit or Bond Fund or Money Market	Total	Over(Under) Prior Year Cash
\$ 3,420,122.70		\$ 3,420,122.70	\$ 2,012,963.84
\$ 2,838,610.53		\$ 2,838,610.53	\$ 432,889.07
\$ 2,704,304.79		\$ 2,704,304.79	\$ 1,586,900.92
\$ 2,735,827.46		\$ 2,735,827.46	\$ 594,334.22
\$ 7,471,423.47		\$ 7,471,423.47	\$ (4,327,132.36)
\$ 2,693,270.07		\$ 2,693,270.07	\$ -
\$ 3,227,110.61		\$ 3,227,110.61	\$ -
\$ 3,550,821.93		\$ 3,550,821.93	\$ -
\$ 3,638,518.79		\$ 3,638,518.79	\$ -
\$ 3,158,133.95		\$ 3,158,133.95	\$ -
\$ 3,684,049.92		\$ 3,684,049.92	\$ -
\$ 1,969,734.78		\$ 1,969,734.78	\$ -
\$ 41,091,929.00	\$ -	\$ 41,091,929.00	\$ (21,621,684.36)

Days AP Payable 18.39

AP VENDOR Check Register - May 1 to May 31, 2021

Check No	Check Date	Vendor Name	GL No	GL Description	Amount
75855	5/3/21	AETNA	001-2030-702	TPA HEALTH PAYABLE HOSPITAL	
					\$172,482.22
75856	5/3/21	MCKESSON	001-6950-360	PHARMACY PHARMACEUTICALS	
	5/3/21	MCKESSON	001-6960-360	340b PROGRAM PHARMACEUTICALS	
					\$66,206.37
75857	5/6/21	ABBOTT LABORATORIES	001-1080-300	INVENTORY-CENTRAL SUPPLY	
	5/6/21	ABBOTT LABORATORIES	001-6400-390	CENTRAL SUPPLIES MEDICAL SUPPLIES	
					\$2,970.33
75858	5/6/21	ACCELERATED CARE PLUS LEASING	001-7100-820	PHYSICAL THER LEASE/RENT EQUIP	
					\$357.25
75859	5/6/21	ALSCO AMERICAN LINEN	001-8150-430	HOUSEKEEPING LAUNDRY	
					\$1,436.30
75860	5/6/21	AMERICAN MESSAGING	001-6050-570	HOSPITALIST TELEPHONE	
					\$20.34
75861	5/6/21	BAXTER HEALTHCARE CORP	001-6950-360	PHARMACY PHARMACEUTICALS	
					\$600.08
75862	5/6/21	BIO-RAD LABORATORIES, INC.	001-1080-300	INVENTORY-CENTRAL SUPPLY	
	5/6/21	BIO-RAD LABORATORIES, INC.	001-6400-390	CENTRAL SUPPLIES MEDICAL SUPPLIES	
					\$2,900.37
75863	5/6/21	BLOODWORKS NORTHWEST	001-6450-650	LABORATORY PURCHASED SVCS OTHER	
					\$6,334.00
75864	5/6/21	CANON FINANCIAL SERVICES INC.	001-2020-120	ACCOUNTS PAYABLE EQUIPMENT LEASES	
					\$5,748.37
75865	5/6/21	CHEVRON	001-8100-520	PLANT FUEL	
					\$121.14
75866	5/6/21	CHUNG, CARLENE	001-6950-570	PHARMACY TELEPHONE	
					\$30.00
75867	5/6/21	CMX MEDICAL IMAGING	001-1080-300	INVENTORY-CENTRAL SUPPLY	
	5/6/21	CMX MEDICAL IMAGING	001-6400-390	CENTRAL SUPPLIES MEDICAL SUPPLIES	
					\$1,995.96
75868	5/6/21	COURIERWEST	001-6450-650	LABORATORY PURCHASED SVCS OTHER	
	5/6/21	COURIERWEST	001-8350-650	PATIENT ACCOUNTS PURCHASED SVCS OTHER	
					\$2,539.95
75869	5/6/21	DIGITAL ASSURANCE CERTIFICATIO	001-8400-650	ADMINISTRATION PURCHASED SVCS OTHER	
					\$250.00
75870	5/6/21	EZ WAY INC.	001-1080-300	INVENTORY-CENTRAL SUPPLY	
					\$161.69
75871	5/6/21	EZE, CHIMA	001-6000-460	MED SURG APPAREL	
					\$81.45
75872	5/6/21	FAVORITE HEALTHCARE STAFFING I	001-6000-270	MED SURG REGISTRY NURSES	
	5/6/21	FAVORITE HEALTHCARE STAFFING I	001-6000-290	MED SURG PRO FEES OTHER	
					\$3,370.13
75873	5/6/21	FED EX	001-8400-970	ADMINISTRATION POSTAGE	
					\$263.50
75874	5/6/21	FIRST CHOICE COFFEE SERVICES	001-8000-420	DIETARY FOOD	
	5/6/21	FIRST CHOICE COFFEE SERVICES	001-8000-820	DIETARY LEASE/RENT EQUIP	
					\$782.74
75875	5/6/21	FIRST CHOICE HEALTH	001-8350-650	PATIENT ACCOUNTS PURCHASED SVCS OTHER	
					\$181.51

75876	5/6/21	FISHER SCIENTIFIC CO.	001-1080-300	INVENTORY-CENTRAL SUPPLY	
	5/6/21	FISHER SCIENTIFIC CO.	001-6400-390	CENTRAL SUPPLIES MEDICAL SUPPLIES	
					\$328.02
75877	5/6/21	GRAINGER	001-1080-300	INVENTORY-CENTRAL SUPPLY	
	5/6/21	GRAINGER	001-6400-490	CENTRAL SUPPLIES OTHER SUPPLIES	
					\$238.23
75878	5/6/21	HEALTH FACILITIES PLANNING & D	001-7320-230	COVID-19 CONSULT & MGMT FEES	
					\$4,960.00
75879	5/6/21	IMAGING SOLUTIONS INC	001-6600-620	MRI REPAIRS & MAINT	
					\$4,167.00
75880	5/6/21	INTEGRATED MEDICAL SYSTEM	001-6000-290	MED SURG PRO FEES OTHER	
					\$934.80
75881	5/6/21	JENNINGS, SHERRY	001-8650-490	PUBLIC INFORMATION OTHER SUPPLIES	
					\$393.57
75882	5/6/21	KCI USA	001-1080-300	INVENTORY-CENTRAL SUPPLY	
	5/6/21	KCI USA	001-6000-820	MED SURG LEASE/RENT EQUIP	
					\$3,498.40
75883	5/6/21	LA JAMBE, KAREN	001-7390-940	HOSPITAL CLINIC TRAVEL & TRAINING	
					\$295.00
75884	5/6/21	LANDAUER, INC	001-6800-480	RADIOLOGY MINOR EQUIPMENT	
					\$6.00
75885	5/6/21	MAXIM HEALTHCARE SERVICES	001-6000-270	MED SURG REGISTRY NURSES	
	5/6/21	MAXIM HEALTHCARE SERVICES	001-6000-290	MED SURG PRO FEES OTHER	
	5/6/21	MAXIM HEALTHCARE SERVICES	001-7150-270	EMERGENCY SVCS REGISTRY NURSES	
					\$22,646.00
75886	5/6/21	McKESSON MEDICAL SURGICAL	001-1080-300	INVENTORY-CENTRAL SUPPLY	
	5/6/21	McKESSON MEDICAL SURGICAL	001-6400-390	CENTRAL SUPPLIES MEDICAL SUPPLIES	
					\$22,117.04
75887	5/6/21	MED ONE CAPITAL FUNDING, LLC	001-6950-820	PHARMACY LEASE/RENT EQUIP	
					\$3,478.40
75888	5/6/21	MEDICAL SOLUTIONS LLC	001-6000-270	MED SURG REGISTRY NURSES	
	5/6/21	MEDICAL SOLUTIONS LLC	001-6000-290	MED SURG PRO FEES OTHER	
	5/6/21	MEDICAL SOLUTIONS LLC	001-7320-275	COVID-19 COVID-19 AGENCY	
					\$11,917.50
75889	5/6/21	MEDLINE INDUSTRIES, INC.	001-1080-300	INVENTORY-CENTRAL SUPPLY	
	5/6/21	MEDLINE INDUSTRIES, INC.	001-6400-390	CENTRAL SUPPLIES MEDICAL SUPPLIES	
					\$11,836.51
75890	5/6/21	MOSS ADAMS LLP	001-1090-605	PREPAID EXPENSES OTHER	
					\$32,300.00
75891	5/6/21	NADERI, CANDY	001-6950-570	PHARMACY TELEPHONE	
					\$30.00
75892	5/6/21	NETWORK SERVICES COMPANY	001-1080-300	INVENTORY-CENTRAL SUPPLY	
					\$341.86
75893	5/6/21	NUWEST GROUP HOLDINGS LLC	001-7320-275	COVID-19 COVID-19 AGENCY	
					\$177.50
75894	5/6/21	PARKS MEDICAL CORPORATION	001-1080-300	INVENTORY-CENTRAL SUPPLY	
	5/6/21	PARKS MEDICAL CORPORATION	001-6400-390	CENTRAL SUPPLIES MEDICAL SUPPLIES	
	5/6/21	PARKS MEDICAL CORPORATION	001-6400-620	CENTRAL SUPPLIES REPAIRS & MAINT	
					\$1,308.01

75895	5/6/21	PERFORMANCE HEALTH SUPPLY INC	001-1080-300	INVENTORY-CENTRAL SUPPLY	
	5/6/21	PERFORMANCE HEALTH SUPPLY INC	001-6400-490	CENTRAL SUPPLIES OTHER SUPPLIES	
					\$42.60
75896	5/6/21	PURE WATER PARTNERS	001-8400-820	ADMINISTRATION LEASE/RENT EQUIP	
					\$342.41
75897	5/6/21	RADIA INC. PS	001-2086-500	ACCRUED IMAGING PRO FEE EXP	
					\$12,660.00
75898	5/6/21	REAMER, PORTEAH	001-6000-460	MED SURG APPAREL	
					\$90.00
75899	5/6/21	RENTON COLLECTIONS INC	001-2030-806	GARNISHMENT PAYABLE HOSPITAL	
					\$340.22
75900	5/6/21	RMP LOGIC, LLC	001-6000-148	MED SURG INFO SYSTEMS	
					\$199.99
75901	5/6/21	SMITH & NEPHEW, INC.	001-1080-300	INVENTORY-CENTRAL SUPPLY	
					\$485.26
75902	5/6/21	SNOQUALMIE VLLY HOSP FOUN	001-2030-907	FOUNDATION PAYABLE	
					\$27.50
75903	5/6/21	SODERSTROM ARCHITECTS	001-1230-996	BUILDINGS CLINICS	
					\$2,835.00
75904	5/6/21	SOLID RENTAL SYSTEMS, LLC	001-8100-820	PLANT LEASE/RENT EQUIP	
					\$473.50
75905	5/6/21	SOUND MEDICAL LABORATORY	001-6450-148	LABORATORY INFO SYSTEMS	
					\$200.00
75906	5/6/21	SOUTHERN COMPUTER WAREHOUSE IN	001-7320-490	COVID-19 OTHR SUPPLIES	
					\$4,719.37
75907	5/6/21	SPACELABS HEALTHCARE	001-1080-300	INVENTORY-CENTRAL SUPPLY	
					\$400.08
75908	5/6/21	STAPLES ADVANTAGE	001-1080-300	INVENTORY-CENTRAL SUPPLY	
	5/6/21	STAPLES ADVANTAGE	001-6400-450	CENTRAL SUPPLIES OFFICE SUPPLIES	
					\$260.24
75909	5/6/21	TERP SIGN LANGUAGE SERVICES LL	001-7900-650	SNOQUALMIE RIDGE PURCHASED SVCS OTHER	
					\$189.12
75910	5/6/21	TOUCH POINT MEDICAL	001-2020-120	ACCOUNTS PAYABLE EQUIPMENT LEASES	
					\$2,119.66
75911	5/6/21	TRI-MED AMBULANCE LLC	001-6000-650	MED SURG PURCHASED SVCS OTHER	
					\$941.45
75912	5/6/21	US BANK EQUIPMENT FINANCE	001-2020-120	ACCOUNTS PAYABLE EQUIPMENT LEASES	
					\$2,488.78
75913	5/6/21	VISTAR TECHNOLOGIES	001-8700-147	MEDICAL STAFF SRVCS SOFTWARE LICENSE	
					\$600.00
75914	5/6/21	WASHINGTON STATE PATROL	001-8700-650	MEDICAL STAFF SERVICES PURCHASED SRVCS OTHER	
					\$11.00
75915	5/6/21	WEBPT INC.	001-7100-650	PHYSICAL THER PURCHASED SVCS OTHER	
					\$1,057.65
75916	5/6/21	WHIT	001-2030-703	TPA DENTAL PAYABLE HOSPITAL	
	5/6/21	WHIT	001-2030-704	TPA VISION PAYABLE HOSPITAL	
	5/6/21	WHIT	001-2030-801	INSURANCE PAYABLE HOSPITAL	
75917					\$21,489.76
	5/11/21	PUGET SOUND PHYSICIANS, PLLC	001-7150-210	EMERGENCY SVCS PRO FEES PHYSICIAN	
75918					\$97,740.00
	5/13/21	ABBOTT LABORATORIES	001-1080-300	INVENTORY-CENTRAL SUPPLY	
	5/13/21	ABBOTT LABORATORIES	001-6400-390	CENTRAL SUPPLIES MEDICAL SUPPLIES	

					\$101.17
75919	5/13/21	ACCRUE SOLUTIONS	001-8400-120	ADMINISTRATION OTHR DIRECT EXP	
					\$3,568.00
75920	5/13/21	ALLY	001-2020-120	ACCOUNTS PAYABLE EQUIPMENT LEASES	
					\$321.32
75921	5/13/21	AMAZON WEB SERVICES, INC	001-8250-147	INFORMATION SYSTEMS SOFTWARE LICENSE	
					\$672.48
75922	5/13/21	BAXTER HEALTHCARE CORP	001-2020-120	ACCOUNTS PAYABLE EQUIPMENT LEASES	
	5/13/21	BAXTER HEALTHCARE CORP	001-6950-147	PHARMACY SOFTWARE LICENSE	
					\$1,196.78
75923	5/13/21	BELLEVUE HEALTHCARE	001-6000-820	MED SURG LEASE/RENT EQUIP	
	5/13/21	BELLEVUE HEALTHCARE	001-7100-490	PHYSICAL THER OTHER SUPPLIES	
					\$185.97
75924	5/13/21	CARDINAL HEALTH / PHARMACY	001-6950-147	PHARMACY SOFTWARE LICENSE	
					\$5,309.40
75925	5/13/21	CARDINAL HEALTH 112, LLC	001-6960-360	340b PROGRAM PHARMACEUTICALS	
					\$1,594.91
75926	5/13/21	CITY OF SNOQUALMIE-UTILIT	001-7900-540	SNOQUALMIE RIDGE WATER	
	5/13/21	CITY OF SNOQUALMIE-UTILIT	001-7900-550	SNOQUALMIE RIDGE DISPOSAL	
	5/13/21	CITY OF SNOQUALMIE-UTILIT	001-8100-540	PLANT WATER	
	5/13/21	CITY OF SNOQUALMIE-UTILIT	001-8100-550	PLANT DISPOSAL	
					\$5,880.83
75927	5/13/21	CMX MEDICAL IMAGING	001-1080-300	INVENTORY-CENTRAL SUPPLY	
	5/13/21	CMX MEDICAL IMAGING	001-6400-390	CENTRAL SUPPLIES MEDICAL SUPPLIES	
					\$986.67
75928	5/13/21	COOPER, YVONNE	001-7100-490	PHYSICAL THER OTHER SUPPLIES	
					\$209.71
75929	5/13/21	FAIRFAX HOSPITAL	001-7150-290	EMERGENCY SVCS PRO FEES OTHER	
					\$4,300.00
75930	5/13/21	FAVORITE HEALTHCARE STAFFING I	001-6000-270	MED SURG REGISTRY NURSES	
					\$988.20
75931	5/13/21	FED EX	001-8400-970	ADMINISTRATION POSTAGE	
					\$93.95
75932	5/13/21	FISHER SCIENTIFIC CO.	001-1080-300	INVENTORY-CENTRAL SUPPLY	
	5/13/21	FISHER SCIENTIFIC CO.	001-6400-390	CENTRAL SUPPLIES MEDICAL SUPPLIES	
					\$1,051.34
75933	5/13/21	FUJIFILM MEDICAL SYSTEMS	001-1080-300	INVENTORY-CENTRAL SUPPLY	
					\$521.83
75934	5/13/21	GRAINGER	001-1080-300	INVENTORY-CENTRAL SUPPLY	
	5/13/21	GRAINGER	001-6400-480	CENTRAL SUPPLIES MINOR EQUIPMENT	
	5/13/21	GRAINGER	001-6400-490	CENTRAL SUPPLIES OTHER SUPPLIES	
					\$892.09
75935	5/13/21	GRAYBAR FINANCIAL SERVICES	001-2020-120	ACCOUNTS PAYABLE EQUIPMENT LEASES	
					\$3,513.56
75936	5/13/21	HAGEN, JOANNA	001-7900-940	SNOQUALMIE RIDGE TRAVEL & TRAINING	
					\$3,287.00
75937	5/13/21	HEALTHCARE FINANCIAL SERVICES	001-2020-120	ACCOUNTS PAYABLE EQUIPMENT LEASES	
					\$97.00
75938	5/13/21	HOUSMAN, ELISABETH	001-7100-460	PHYSICAL THER APPAREL	
					\$45.00
75939	5/13/21	INTEGRATED MEDICAL SYSTEM	001-6000-290	MED SURG PRO FEES OTHER	
					\$479.40

75940	5/13/21	LEASE ADMINISTRATION CENTER	001-6450-820	LABORATORY LEASE/RENT EQUIP	
					\$252.52
75941	5/13/21	MAXIM HEALTHCARE SERVICES	001-6000-270	MED SURG REGISTRY NURSES	
	5/13/21	MAXIM HEALTHCARE SERVICES	001-6000-290	MED SURG PRO FEES OTHER	
					\$9,156.60
75942	5/13/21	McKESSON MEDICAL SURGICAL	001-1080-300	INVENTORY-CENTRAL SUPPLY	
	5/13/21	McKESSON MEDICAL SURGICAL	001-6400-390	CENTRAL SUPPLIES MEDICAL SUPPLIES	
					\$7,138.11
75943	5/13/21	MEDICAL SOLUTIONS LLC	001-6000-270	MED SURG REGISTRY NURSES	
	5/13/21	MEDICAL SOLUTIONS LLC	001-6000-290	MED SURG PRO FEES OTHER	
					\$14,340.00
75944	5/13/21	MEDLINE INDUSTRIES, INC.	001-1080-300	INVENTORY-CENTRAL SUPPLY	
	5/13/21	MEDLINE INDUSTRIES, INC.	001-6400-390	CENTRAL SUPPLIES MEDICAL SUPPLIES	
					\$14,025.54
75945	5/13/21	MEDTOX DIAGNOSTICS INC	001-1080-300	INVENTORY-CENTRAL SUPPLY	
	5/13/21	MEDTOX DIAGNOSTICS INC	001-6400-390	CENTRAL SUPPLIES MEDICAL SUPPLIES	
					\$40.18
75946	5/13/21	MOUNTAIN MIST WATER	001-7900-990	SNOQUALMIE RIDGE MISC EXPENSE	
	5/13/21	MOUNTAIN MIST WATER	001-8100-990	PLANT MISC EXPENSE	
					\$26.87
75947	5/13/21	NETWORK SERVICES COMPANY	001-1080-300	INVENTORY-CENTRAL SUPPLY	
	5/13/21	NETWORK SERVICES COMPANY	001-6400-440	CENTRAL SUPPLIES CLEANING SUPPLIES	
					\$1,390.20
75948	5/13/21	O'BRIEN, KATE	001-6000-460	MED SURG APPAREL	
					\$44.98
75949	5/13/21	OFFICE DEPOT	001-1080-300	INVENTORY-CENTRAL SUPPLY	
	5/13/21	OFFICE DEPOT	001-6400-450	CENTRAL SUPPLIES OFFICE SUPPLIES	
					\$366.14
75950	5/13/21	OVERLAKE HOSPITAL	001-7150-940	EMERGENCY SVCS TRAVEL & TRAINING	
					\$400.00
75951	5/13/21	PACIFIC OFFICE AUTOMATION	001-2020-120	ACCOUNTS PAYABLE EQUIPMENT LEASES	
					\$774.69
75952	5/13/21	PACIFIC OFFICE AUTOMATION	001-2020-120	ACCOUNTS PAYABLE EQUIPMENT LEASES	
					\$875.37
75953	5/13/21	PACIFIC OFFICE AUTOMATION	001-2020-120	ACCOUNTS PAYABLE EQUIPMENT LEASES	
					\$622.87
75954	5/13/21	PARATEX PEST PREVENTION	001-8100-650	PLANT PURCHASED SVCS OTHER	
					\$489.15
75955	5/13/21	PERFORMANCE HEALTH SUPPLY INC	001-1080-300	INVENTORY-CENTRAL SUPPLY	
	5/13/21	PERFORMANCE HEALTH SUPPLY INC	001-6400-480	CENTRAL SUPPLIES MINOR EQUIPMENT	
					\$33.70
75956	5/13/21	PLATT	001-8100-490	PLANT OTHER SUPPLIES	
					\$68.15
75957	5/13/21	PRAXAIR DISTRIBUTION INC	001-2020-120	ACCOUNTS PAYABLE EQUIPMENT LEASES	
	5/13/21	PRAXAIR DISTRIBUTION INC	001-8400-340	ADMINISTRATION OXYGEN & GASES	
					\$2,944.24
75958	5/13/21	PUGET SOUND ENERGY - ELEC	001-7900-510	SNOQUALMIE RIDGE ELECTRICITY	
	5/13/21	PUGET SOUND ENERGY - ELEC	001-7900-530	SNOQUALMIE RIDGE GAS	

	5/13/21	PUGET SOUND ENERGY - ELEC	001-8100-510	PLANT ELECTRICITY	
	5/13/21	PUGET SOUND ENERGY - ELEC	001-8100-530	PLANT GAS	
					\$18,620.99
75959	5/13/21	PUGET SOUND ENERGY - GAS	001-8100-530	PLANT GAS	
					\$8,872.74
75960	5/13/21	PUGET SOUND PHYSICIANS, PLLC	001-7150-210	EMERGENCY SVCS PRO FEES PHYSICIAN	
					\$3,250.00
75961	5/13/21	QUALITY WATER FINANCIAL	001-8100-820	PLANT LEASE/RENT EQUIP	
					\$108.65
75962	5/13/21	RATZLAFF, PATTY	001-7550-490	THERAPEUTIC REC OTHR SUPPLIES	
					\$240.69
75963	5/13/21	RESTORATION HEALTH SERVICES LL	001-6000-290	MED SURG PRO FEES OTHER	
					\$960.00
75964	5/13/21	SEQUOYAH ELECTRIC LLC	001-1260-995	EQUIPMENT	
					\$7,523.13
75965	5/13/21	A/R PATIENTS	001-1030-100	A/R PATIENTS	
					\$73.71
75966	5/13/21	SOUND MEDICAL LABORATORY	001-6450-640	LABORATORY MGMT SERVICES	
					\$71,327.13
75967	5/13/21	SPRINT	001-8400-570	ADMINISTRATION TELEPHONE	
					\$490.30
75968	5/13/21	STAPLES ADVANTAGE	001-1080-300	INVENTORY-CENTRAL SUPPLY	
	5/13/21	STAPLES ADVANTAGE	001-6400-440	CENTRAL SUPPLIES CLEANING SUPPLIES	
	5/13/21	STAPLES ADVANTAGE	001-6400-450	CENTRAL SUPPLIES OFFICE SUPPLIES	
	5/13/21	STAPLES ADVANTAGE	001-6400-490	CENTRAL SUPPLIES OTHER SUPPLIES	
					\$666.43
75969	5/13/21	THE HARTFORD	001-8400-910	ADMINISTRATION INSURANCE	
					\$4,073.46
75970	5/13/21	TIAA COMMERCIAL FINANCE, INC.	001-2020-120	ACCOUNTS PAYABLE EQUIPMENT LEASES	
					\$1,090.80
75971	5/13/21	US BANK TFM-CM9705	001-2085-114	INTEREST PAYABLE 2015 REVENUE BONDS TAXABLE	
	5/13/21	US BANK TFM-CM9705	001-2085-115	INTEREST PAYABLE 2015 REVENUE BONDS TAX EXEMPT	
	5/13/21	US BANK TFM-CM9705	001-2090-914	CURRENT PORTION REVENUE BONDS 2015 TAXABLE	
					\$305,968.75
75972	5/13/21	WALES, HIROKO	001-6000-940	MED SURG TRAVEL & TRAINING	
					\$375.00
75973	5/13/21	WASTE MANAGEMENT - SNOKIN	001-8100-550	PLANT DISPOSAL	
					\$5,304.59
75974	5/13/21	WIPFLI LLP	001-8400-230	ADMINISTRATION CONSULT & MGMT FEES	
					\$4,950.00
75975	5/20/21	A/R PATIENTS	001-1030-100	A/R PATIENTS	
	5/20/21	A/R PATIENTS	001-1030-200	A/R PATIENTS - CLINICS	
					\$200.00
75976	5/20/21	A/R PATIENTS - CLINICS	001-1030-200	A/R PATIENTS - CLINICS	
					\$60.00
75977	5/20/21	WASHINGTON STATE DEPT. OF	001-6450-912	LABORATORY LICENSE & TAXES	
					\$250.00
75978	5/20/21	WASHINGTON STATE DEPT. OF	001-6450-912	LABORATORY LICENSE & TAXES	
					\$7,290.00
75979	5/20/21	ABILITY NETWORK, INC	001-8400-147	ADMINISTRATION SOFTWARE LICENSE	
					\$848.25

75980	5/20/21	AFLAC	001-2030-805	AFLAC PAYABLE HOSPITAL	\$1,996.34
75981	5/20/21	ASSOC OF WASHINGTON PUBLIC HOS	001-1090-995	PREPAID DUES & SUBSCRIPTIONS	\$11,829.00
75982	5/20/21	AVENDANO PEREZ, CARLA	001-8150-460	HOUSEKEEPING APPAREL	\$150.94
75983	5/20/21	BIO-RAD LABORATORIES, INC.	001-1080-300	INVENTORY-CENTRAL SUPPLY	
	5/20/21	BIO-RAD LABORATORIES, INC.	001-6400-390	CENTRAL SUPPLIES MEDICAL SUPPLIES	
	5/20/21	BIO-RAD LABORATORIES, INC.	001-6450-390	LABORATORY MEDICAL SUPPLIES	\$2,310.04
75984	5/20/21	BLOODWORKS NORTHWEST	001-6450-650	LABORATORY PURCHASED SVCS OTHER	\$4,191.00
75985	5/20/21	CARDINAL HEALTH	001-6400-300	CENTRAL SUPPLIES SUPPLIES	\$36.87
75986	5/20/21	CEBIDO, FREDELITA	001-8150-460	HOUSEKEEPING APPAREL	\$252.05
75987	5/20/21	CENTURYLINK	001-8250-146	INFORMATION SYSTEMS IT DATA	\$1,116.89
75988	5/20/21	CENTURYLINK	001-8250-146	INFORMATION SYSTEMS IT DATA	\$8,452.85
75989	5/20/21	CITY WIDE FACILITY SOLUTIONS	001-7900-650	SNOQUALMIE RIDGE PURCHASED SVCS OTHER	
	5/20/21	CITY WIDE FACILITY SOLUTIONS	001-8300-650	ACCOUNTING PURCHASED SVCS OTHER	
	5/20/21	CITY WIDE FACILITY SOLUTIONS	001-8350-650	PATIENT ACCOUNTS PURCHASED SVCS OTHER	
	5/20/21	CITY WIDE FACILITY SOLUTIONS	001-8500-650	HUMAN RESOURCES PURCHASED SVCS OTHER	\$3,350.00
75990	5/20/21	COMCAST	001-7390-146	HOSPITAL CLINIC IT DATA	
	5/20/21	COMCAST	001-8250-146	INFORMATION SYSTEMS IT DATA	\$1,156.57
75991	5/20/21	CREATIVE OFFICE	001-1260-995	EQUIPMENT	\$8,621.57
75992	5/20/21	DATAWATCH CORPORATION	001-8250-147	INFORMATION SYSTEMS SOFTWARE LICENSE	\$1,995.00
75993	5/20/21	DEPT.OF LABOR & INDUSTRIES	001-8100-650	PLANT PURCHASED SVCS OTHER	\$242.10
75994	5/20/21	DINGUS, ZARECOR & ASSO. PLLC	001-7330-230	SVH DRIVE THRU CONSULT & MGMT FEES	
	5/20/21	DINGUS, ZARECOR & ASSO. PLLC	001-8400-230	ADMINISTRATION CONSULT & MGMT FEES	\$7,500.00
75995	5/20/21	ETG FIRE	001-8100-620	PLANT REPAIRS & MAINT	\$401.82
75996	5/20/21	FIRST CHOICE COFFEE SERVICES	001-8000-420	DIETARY FOOD	\$436.02
75997	5/20/21	FIRST CHOICE HEALTH	001-8400-120	ADMINISTRATION OTHR DIRECT EXP	\$404.92
75998	5/20/21	FRENTZEN, AMY	001-8400-490	ADMINISTRATION OTHER SUPPLIES	\$123.10
75999	5/20/21	GRAINGER	001-1080-300	INVENTORY-CENTRAL SUPPLY	
	5/20/21	GRAINGER	001-6400-480	CENTRAL SUPPLIES MINOR EQUIPMENT	
	5/20/21	GRAINGER	001-6400-490	CENTRAL SUPPLIES OTHER SUPPLIES	\$577.51
76000	5/20/21	HEALTH CARE LOGISTICS	001-6950-490	PHARMACY OTHR SUPPLIES	\$279.52
76001	5/20/21	HOLOGIC CAPITAL A PROGRAM OF	001-2020-120	ACCOUNTS PAYABLE EQUIPMENT LEASES	

					\$1,838.63
76002	5/20/21	HORIBA INSTRUMENTS INCORPORATE	001-6450-620	LABORATORY REPAIRS & MAINT	
					\$434.80
76003	5/20/21	IRON MOUNTAIN	001-8100-550	PLANT DISPOSAL	
					\$5,456.72
76004	5/20/21	JESSICA SELF LLC	001-8650-280	PUBLIC INFORMATION ADVERTISING	
					\$1,500.00
76005	5/20/21	KCI USA	001-6000-490	MED SURG OTHR SUPPLIES	
	5/20/21	KCI USA	001-6000-820	MED SURG LEASE/RENT EQUIP	
					\$2,394.24
76006	5/20/21	KNOWBE4 INC	001-8250-147	INFORMATION SYSTEMS SOFTWARE LICENSE	
					\$7,454.65
76007	5/20/21	LAB CORP OF AMERICA	001-6450-610	LABORATORY PURCHASED SVCS MED	
					\$181.82
76008	5/20/21	LAND CARE USA LLC	001-8100-650	PLANT PURCHASED SVCS OTHER	
					\$1,364.19
76009	5/20/21	MAXIM HEALTHCARE SERVICES	001-6000-270	MED SURG REGISTRY NURSES	
	5/20/21	MAXIM HEALTHCARE SERVICES	001-6000-290	MED SURG PRO FEES OTHER	
	5/20/21	MAXIM HEALTHCARE SERVICES	001-7150-270	EMERGENCY SVCS REGISTRY NURSES	
					\$12,741.80
76010	5/20/21	McKESSON MEDICAL SURGICAL	001-1080-300	INVENTORY-CENTRAL SUPPLY	
	5/20/21	McKESSON MEDICAL SURGICAL	001-6400-390	CENTRAL SUPPLIES MEDICAL SUPPLIES	
					\$6,214.07
76011	5/20/21	MEDEFIS , INC.	001-6450-220	LABORATORY PRO FEES THER & OTHR	
					\$2,800.00
76012	5/20/21	MEDICAL SOLUTIONS LLC	001-6000-270	MED SURG REGISTRY NURSES	
	5/20/21	MEDICAL SOLUTIONS LLC	001-6000-290	MED SURG PRO FEES OTHER	
					\$19,568.50
76013	5/20/21	MEDLINE INDUSTRIES, INC.	001-1080-300	INVENTORY-CENTRAL SUPPLY	
	5/20/21	MEDLINE INDUSTRIES, INC.	001-6400-390	CENTRAL SUPPLIES MEDICAL SUPPLIES	
					\$13,363.48
76014	5/20/21	MORRISON HEALTHCARE	001-1090-601	PREPAID SERVICE CONTRACT	
	5/20/21	MORRISON HEALTHCARE	001-8000-420	DIETARY FOOD	
	5/20/21	MORRISON HEALTHCARE	001-8000-650	DIETARY PURCHASED SVCS OTHER	
					\$38,892.39
76015	5/20/21	NETWORK SERVICES COMPANY	001-1080-300	INVENTORY-CENTRAL SUPPLY	
					\$315.94
76016	5/20/21	NOVARAD CORP	001-6800-147	RADIOLOGY SOFTWARE LICENSE	
					\$1,185.06
76017	5/20/21	OVERLAKE HOSP MED CENTER	001-6900-610	ULTRASOUND PURCHASED SERVICES MEDICAL	
					\$394.00
76018	5/20/21	OVERLAKE MEDICAL CLINICS	001-2086-500	ACCRUED IMAGING PRO FEE EXP	
					\$3,750.00
76019	5/20/21	PACIFIC OFFICE AUTOMATION	001-2020-120	ACCOUNTS PAYABLE EQUIPMENT LEASES	
					\$137.61
76020	5/20/21	PERFORMANCE HEALTH SUPPLY INC	001-1080-300	INVENTORY-CENTRAL SUPPLY	
	5/20/21	PERFORMANCE HEALTH SUPPLY INC	001-6400-490	CENTRAL SUPPLIES OTHER SUPPLIES	
					\$296.72
76021	5/20/21	PHILIPS MEDICAL CAPITAL	001-2020-120	ACCOUNTS PAYABLE EQUIPMENT LEASES	
					\$2,140.75
76022	5/20/21	PHYSICIANS INSURANCE	001-8400-910	ADMINISTRATION INSURANCE	

					\$7,765.75
76023	5/20/21	PLATT	001-8100-490	PLANT OTHER SUPPLIES	
					\$48.46
76024	5/20/21	POPE, HOUSER & BARNES PLLC	001-8400-240	ADMINISTRATION LEGAL FEES	
					\$3,916.00
76025	5/20/21	PRECISION DYNAMICS CORP	001-1080-300	INVENTORY-CENTRAL SUPPLY	
					\$144.70
76026	5/20/21	PRECISION DYNAMICS CORP.	001-1080-300	INVENTORY-CENTRAL SUPPLY	
	5/20/21	PRECISION DYNAMICS CORP.	001-6400-390	CENTRAL SUPPLIES MEDICAL SUPPLIES	
					\$345.70
76027	5/20/21	PUGET SOUND ENERGY - GAS	001-8100-530	PLANT GAS	
					\$7,169.75
76028	5/20/21	PUGET SOUND PHYSICIANS, PLLC	001-7150-210	EMERGENCY SVCS PRO FEES PHYSICIAN	
					\$97,470.00
76029	5/20/21	RENTON COLLECTIONS INC	001-2030-806	GARNISHMENT PAYABLE HOSPITAL	
					\$340.22
76030	5/20/21	SMITH & NEPHEW, INC.	001-1080-300	INVENTORY-CENTRAL SUPPLY	
	5/20/21	SMITH & NEPHEW, INC.	001-6400-390	CENTRAL SUPPLIES MEDICAL SUPPLIES	
					\$433.71
76031	5/20/21	SNOQUALMIE VLLY HOSP FOUN	001-2030-907	FOUNDATION PAYABLE	
					\$27.50
76032	5/20/21	STAPLES ADVANTAGE	001-1080-300	INVENTORY-CENTRAL SUPPLY	
	5/20/21	STAPLES ADVANTAGE	001-6400-450	CENTRAL SUPPLIES OFFICE SUPPLIES	
					\$364.11
76033	5/20/21	STERICYCLE	001-6950-550	PHARMACY DISPOSAL	
					\$1,909.06
76034	5/20/21	STERLING	001-8500-960	HUMAN RESOURCES RECRUITMENT	
					\$2,235.42
76035	5/20/21	U.S. BANK ST. PAUL	001-9870-921	INTEREST EXPENSE 2020A LTGO	
	5/20/21	U.S. BANK ST. PAUL	001-9870-922	INTEREST EXPENSE 2020B LTGO	
					\$339,694.00
76036	5/20/21	WASHINGTON STATE DEPT. OF	001-6450-912	LABORATORY LICENSE & TAXES	
					\$190.00
76037	5/20/21	WESTLAKE HARDWARE, INC.	001-8100-490	PLANT OTHER SUPPLIES	
					\$490.34
76038	5/26/21	ACCELERATED CARE PLUS LEASING	001-7100-820	PHYSICAL THER LEASE/RENT EQUIP	
					\$357.25
76039	5/26/21	AGILITI HEALTH, INC.	001-6000-820	MED SURG LEASE/RENT EQUIP	
					\$1,147.87
76040	5/26/21	ALL STATE SECURITY	001-7330-650	SVH DRIVE THRU PURCHASED SVCS OTHER	
	5/26/21	ALL STATE SECURITY	001-8100-650	PLANT PURCHASED SVCS OTHER	
					\$32,486.00
76041	5/26/21	BAXTER HEALTHCARE CORP	001-6950-360	PHARMACY PHARMACEUTICALS	
					\$800.96
76042	5/26/21	BLACKPOINT IT SERVICES	001-1090-994	PREPAID SOFTWARE LICENSES	
					\$12,406.89
76043	5/26/21	BLAUVELT, TERZAH	001-7100-460	PHYSICAL THER APPAREL	
					\$90.00
76044	5/26/21	CARDINAL HEALTH	001-6400-300	CENTRAL SUPPLIES SUPPLIES	
					\$37.81
76045	5/26/21	CASCADE HEALTHCARE SERVIC	001-6000-940	MED SURG TRAVEL & TRAINING	
					\$220.00
76046	5/26/21	CENTER FOR RURAL HEALTH	001-8400-940	ADMINISTRATION TRAVEL & TRAINING	
					\$7,590.00
76047	5/26/21	CHEN, ALICIA	001-7450-460	OCCUPATIONAL THER APPAREL	
					\$45.00

76048	5/26/21	COMPUTER AIDED SOLUTIONS LLC	001-6400-650	CENTRAL SUPPLIES PURCHASED SVCS OTHER	
					\$454.13
76049	5/26/21	DELIVERY EXPRESS INC.	001-6450-650	LABORATORY PURCHASED SVCS OTHER	
					\$372.92
76050	5/26/21	FAVORITE HEALTHCARE STAFFING I	001-6000-290	MED SURG PRO FEES OTHER	
					\$847.55
76051	5/26/21	FED EX	001-8400-970	ADMINISTRATION POSTAGE	
					\$64.99
76052	5/26/21	GE PRECISION HEALTHCARE LLC	001-2020-120	ACCOUNTS PAYABLE EQUIPMENT LEASES	
					\$4,529.71
76053	5/26/21	GRAINGER	001-1080-300	INVENTORY-CENTRAL SUPPLY	
	5/26/21	GRAINGER	001-6400-490	CENTRAL SUPPLIES OTHER SUPPLIES	
					\$1,190.63
76054	5/26/21	GUARDIAN SECURITY	001-7900-650	SNOQUALMIE RIDGE PURCHASED SVCS OTHER	
	5/26/21	GUARDIAN SECURITY	001-8100-650	PLANT PURCHASED SVCS OTHER	
					\$250.01
76055	5/26/21	HEALTHCARE FINANCIAL SERVICES	001-2020-120	ACCOUNTS PAYABLE EQUIPMENT LEASES	
					\$3,323.96
76056	5/26/21	HERRMANN, ANNI	001-6000-460	MED SURG APPAREL	
					\$90.00
76057	5/26/21	HILL-ROM COMPANY, INC	001-6000-820	MED SURG LEASE/RENT EQUIP	
					\$37,625.65
76058	5/26/21	HOSPITAL CENTRAL SERVICES ASSO	001-8150-430	HOUSEKEEPING LAUNDRY	
					\$13,405.50
76059	5/26/21	HUFFMAN, VALERIE	001-7390-650	HOSPITAL CLINIC PURCHASED SVCS OTHER	
					\$1,724.22
76060	5/26/21	IV NURSE CONSULTANTS, INC	001-6000-650	MED SURG PURCHASED SVCS OTHER	
					\$595.00
76061	5/26/21	KBH c/o FIFTH THIRD BANK	001-2020-120	ACCOUNTS PAYABLE EQUIPMENT LEASES	
	5/26/21	KBH c/o FIFTH THIRD BANK	001-6000-820	MED SURG LEASE/RENT EQUIP	
	5/26/21	KBH c/o FIFTH THIRD BANK	001-6950-820	PHARMACY LEASE/RENT EQUIP	
	5/26/21	KBH c/o FIFTH THIRD BANK	001-7100-820	PHYSICAL THER LEASE/RENT EQUIP	
	5/26/21	KBH c/o FIFTH THIRD BANK	001-7450-820	OCCUPATIONAL THERAPY RENTAL	
	5/26/21	KBH c/o FIFTH THIRD BANK	001-7600-820	ENDOSCOPY LEASE/RENT EQUIP	
	5/26/21	KBH c/o FIFTH THIRD BANK	001-8100-820	PLANT LEASE/RENT EQUIP	
	5/26/21	KBH c/o FIFTH THIRD BANK	001-8150-820	HOUSEKEEPING LEASE/RENT EQUIP	
	5/26/21	KBH c/o FIFTH THIRD BANK	001-8400-820	ADMINISTRATION LEASE/RENT EQUIP	
					\$48,047.20
76062	5/26/21	KEYBANK	001-6400-300	CENTRAL SUPPLIES SUPPLIES	
	5/26/21	KEYBANK	001-7100-490	PHYSICAL THER OTHER SUPPLIES	
	5/26/21	KEYBANK	001-7150-490	EMERGENCY SVCS OTHER SUPPLIES	
	5/26/21	KEYBANK	001-7320-930	COVID-19 DUES & SUBS	
	5/26/21	KEYBANK	001-8150-490	HOUSEKEEPING OTHER SUPPLIES	
	5/26/21	KEYBANK	001-8250-147	INFORMATION SYSTEMS SOFTWARE LICENSE	
	5/26/21	KEYBANK	001-8250-990	INFORMATION SYSTEMS MISC EXPENSE	
	5/26/21	KEYBANK	001-8400-450	ADMINISTRATION OFFICE SUPPLIES	
	5/26/21	KEYBANK	001-8400-490	ADMINISTRATION OTHER SUPPLIES	
	5/26/21	KEYBANK	001-8400-650	ADMINISTRATION PURCHASED SVCS OTHER	
	5/26/21	KEYBANK	001-8400-990	ADMINISTRATION MISC EXPENSE	
	5/26/21	KEYBANK	001-8500-960	HUMAN RESOURCES RECRUITMENT	
	5/26/21	KEYBANK	001-8650-990	PUBLIC INFORMATION MISC EXPENSE	

	5/26/21	KEYBANK	001-8700-650	MEDICAL STAFF SERVICES PURCHASED SRVCS OTHER	
	5/26/21	KEYBANK	001-8750-146	COMMISSIONERS IT DATA	
					\$14,273.76
76063	5/26/21	KNG SNOQUALMIE RIDGE LLC	001-2020-120	ACCOUNTS PAYABLE EQUIPMENT LEASES	
					\$22,115.13
76064	5/26/21	MAXIM HEALTHCARE SERVICES	001-6000-270	MED SURG REGISTRY NURSES	
	5/26/21	MAXIM HEALTHCARE SERVICES	001-6000-290	MED SURG PRO FEES OTHER	
	5/26/21	MAXIM HEALTHCARE SERVICES	001-7150-270	EMERGENCY SVCS REGISTRY NURSES	
					\$7,964.60
76065	5/26/21	McKESSON MEDICAL SURGICAL	001-1080-300	INVENTORY-CENTRAL SUPPLY	
	5/26/21	McKESSON MEDICAL SURGICAL	001-6400-390	CENTRAL SUPPLIES MEDICAL SUPPLIES	
	5/26/21	McKESSON MEDICAL SURGICAL	001-6400-490	CENTRAL SUPPLIES OTHER SUPPLIES	
					\$12,262.56
76066	5/26/21	MED ONE CAPITAL FUNDING, LLC	001-2020-120	ACCOUNTS PAYABLE EQUIPMENT LEASES	
					\$2,121.83
76067	5/26/21	MEDICAL DYNAMICS	001-1080-300	INVENTORY-CENTRAL SUPPLY	
					\$51.70
76068	5/26/21	MEDICAL SOLUTIONS LLC	001-6000-270	MED SURG REGISTRY NURSES	
	5/26/21	MEDICAL SOLUTIONS LLC	001-6000-290	MED SURG PRO FEES OTHER	
					\$12,687.15
76069	5/26/21	MEDLINE INDUSTRIES, INC.	001-1080-300	INVENTORY-CENTRAL SUPPLY	
	5/26/21	MEDLINE INDUSTRIES, INC.	001-6400-390	CENTRAL SUPPLIES MEDICAL SUPPLIES	
					\$10,376.98
76070	5/26/21	MEDTOX DIAGNOSTICS INC	001-1080-300	INVENTORY-CENTRAL SUPPLY	
	5/26/21	MEDTOX DIAGNOSTICS INC	001-6400-390	CENTRAL SUPPLIES MEDICAL SUPPLIES	
					\$2,280.80
76071	5/26/21	NETWORK SERVICES COMPANY	001-1080-300	INVENTORY-CENTRAL SUPPLY	
	5/26/21	NETWORK SERVICES COMPANY	001-6400-390	CENTRAL SUPPLIES MEDICAL SUPPLIES	
	5/26/21	NETWORK SERVICES COMPANY	001-6400-440	CENTRAL SUPPLIES CLEANING SUPPLIES	
	5/26/21	NETWORK SERVICES COMPANY	001-6400-490	CENTRAL SUPPLIES OTHER SUPPLIES	
					\$1,332.15
76072	5/26/21	NYORO, GRACE	001-6000-460	MED SURG APPAREL	
					\$90.00
76073	5/26/21	OFFICE DEPOT	001-1080-300	INVENTORY-CENTRAL SUPPLY	
	5/26/21	OFFICE DEPOT	001-6400-450	CENTRAL SUPPLIES OFFICE SUPPLIES	
					\$132.34
76074	5/26/21	ORTHO-CLINICAL DIAGNOSTICS INC	001-1080-300	INVENTORY-CENTRAL SUPPLY	
	5/26/21	ORTHO-CLINICAL DIAGNOSTICS INC	001-6400-390	CENTRAL SUPPLIES MEDICAL SUPPLIES	
					\$508.72
76075	5/26/21	PACIFIC OFFICE AUTOMATION	001-2020-120	ACCOUNTS PAYABLE EQUIPMENT LEASES	
					\$774.69
76076	5/26/21	PITNEY BOWES	001-8400-970	ADMINISTRATION POSTAGE	
					\$604.50
76077	5/26/21	PLATT	001-8100-490	PLANT OTHER SUPPLIES	
					\$392.53
76078	5/26/21	PUGET SOUND DISPATCH, LLC	001-6450-650	LABORATORY PURCHASED SVCS OTHER	
					\$860.40

76079	5/26/21	QUINTRON INSTRUMENT COMPANY	001-1080-300	INVENTORY-CENTRAL SUPPLY	
					\$1,341.78
76080	5/26/21	RADIA INC. PS	001-2086-500	ACCRUED IMAGING PRO FEE EXP	
					\$13,700.00
76081	5/26/21	RELIAS LEARNING LLC	001-6000-940	MED SURG TRAVEL & TRAINING	
					\$1,476.39
76082	5/26/21	RESTORATION HEALTH SERVICES LL	001-6000-290	MED SURG PRO FEES OTHER	
					\$1,491.00
76083	5/26/21	STAPLES ADVANTAGE	001-1080-300	INVENTORY-CENTRAL SUPPLY	
	5/26/21	STAPLES ADVANTAGE	001-6400-450	CENTRAL SUPPLIES OFFICE SUPPLIES	
					\$791.97
76084	5/26/21	TRANE U.S INC.	001-8100-620	PLANT REPAIRS & MAINT	
					\$108.05
76085	5/26/21	TRI-MED TRANSPORTATION LLC	001-6000-650	MED SURG PURCHASED SVCS OTHER	
					\$8,647.00
76086	5/26/21	ULTRALING HEALTHCARE		ULTRASOUND PURCHASED SERVICES MEDICAL	\$24.50
	5/26/21	ULTRALING HEALTHCARE			
				VOID	(\$24.50)
76087	5/26/21	ULTRALING HEALTHCARE	001-6900-610	ULTRASOUND PURCHASED SERVICES MEDICAL	\$24.50

TOTAL

\$ 1,994,858.45



Public Hospital District No. 4, King County
Finance Committee
Minutes
June 29, 2021

Committee Members:

David Speikers	Commissioner, Chair of Finance
Emma Herron	Commissioner, President
Renee Jensen	CEO
Patrick Ritter	CFO
Karyn Denton	COO
Rachel Thompson, MD	CMO
Jim Baldauf	Finance Director

Income Statement Narrative:

Net patient revenue was 6% below budgeted monthly income for May. A daily inpatient census of 21.2 left payments short on the inpatient side by \$92,000. Endoscopy, Lab, Pharmacy, Infusion, and Wound were down a combined \$104,000. Clinics were down about \$75,000. The favorable revenue variances included MRI, CT, and Therapies which were \$210,000 better than budget projections. May ED volumes increased slightly over April, and ER revenue was right at budget.

May's operating loss was \$303,000 more than budget. A significant portion of this loss (\$150,000) was payer mix related included increased Medicaid and Premiera patients. The remaining loss was due to the decreased revenues mentioned above.

We recognized \$816,000 in PRF funds in May for COVID 19 expenses and lower 2021 revenues.

Expense Variances

Salaries Increased 2%. The District hired clerks for King County Vaccine project, which the FEMA contract will reimburse. Also converted some agency to directly employed staff.

Professional Fees were \$17,672 above budget—Pro fees are still above budget, but total expense decreased vs. April due to reduced census and conversion to direct employed for agency staff.

Repairs were \$14,000 above budget. HVAC Maintenance and Security Camera Software.

Supplies were \$42,000 above budget—increased supplies for King County Vaccine Project and the increased item expenses. The pandemic has increased the cost of basic supplies like gloves by 300%.

Other Expenses were \$12,076 above budget. B&O taxes and Dues and Subscriptions payments to vendors and postage increased due to letters sent to patients for provider changes.

Purchased Services were \$13,969 above budget—COVID 19 expense and net revenue collection increase (Lower AR).

Balance Sheet Highlights:

- Assets Decrease
 - Cash Down paying AP
 - AR down
 - Current Liabilities Decrease
 - Monthly CMS Advance Payment Recoupment
 - Recognition of CARES Funds
 - Increase in Equity ~\$476,000 NI
 - Net Income from CARES recognition
-

Cash Flow Statement Highlights:

- **Operating Activities:** Decrease ~\$401,000
 - AP payments
 - Deferred Stimulus recognition
- **Investing Activities:** Increase ~\$72,000
 - Leases and rights to use.
- **Financing Activities:** Decrease ~\$84,000
 - Debt payments.

Total cash decrease ~\$413,000

AR Days Goal 55

- 51.9 Days

Bond Covenants: (Snapshot forecast)

- Debt Coverage 5.0. requirement 1.20
- Reserve Requirement is at \$3,675,188 as required.
- Days cash is 111. The bond requirement is 60

NEXT MEETING: Tuesday, July 27, 2021 – 11:30am-1:00pm – Zoom

Approved:



**Public Hospital District No. 4, King County
Quality Steering Committee
June 17, 2021**

Committee Members:

Jen Carter	Commissioner, Chair
Dariel Norris	Commissioner
Renee Jensen	CEO
Rachel Thompson, MD	CMO
Patrick Ritter	CFO
Karyn Denton	COO
Rachel Weber	DON

Agenda:

1. Quality Program Redesign
2. Quality Reporting
3. CEO 2021 Quality Data

Minutes:

Reference Dr. Thompson's presentation.

Notes:

- Renamed "Quality Committee" (removed "Improvement") and defining broader scope than improvement alone.
- Have reviewed the over 120 improvement projects in SQSS and designated these as quality assurance or performance where appropriate. Approximately 30 remain for our team to review and prioritize. We will be looking to align these with our Strategic Plan.
- Dr. Thompson will review hospital patient experience ratings of 44% in Q4 of 2020 to look for more details.
- Dr. Thompson will retrieve data for 2020 Safety Zones severity to have prior year in addition to the 2021 reported today.

NEXT MEETING: September 16, 2021, 3-5pm

Approved: